

Nur für Forschungszwecke

IFT81 Polyklonaler Antikörper

Katalog-Nr.:CL488-11744

Vorgestelltes Produkt



Allgemeine Informationen

Katalog-Nr.: CL488-11744	GenBank-Zugangsnummer: BC029349	Reinigungsmethode: Antigen-Affinitätsreinigung
Größe: 100ul , Konzentration: 1000 µg/ml von28981 Nanodrop;	GeneID (NCBI): intraflagellar transport 81 homolog (Chlamydomonas)	Empfohlene Verdünnungen: IF 1:50-1:500
Wirt: Kaninchen	Vollständiger Name: intraflagellar transport 81 homolog (Chlamydomonas)	Anregungs-/Emissionsmaxima-Wellenlängen: 493 nm / 522 nm
Isotyp: IgG	Berechnete Masse: 676 aa, 80 kDa	
Immunogen Katalognummer: AG2339	Beobachtete Masse: 75-80 kDa	

Anwendungen

Geprüfte Anwendungen: IF	Positivkontrollen: IF : MDCK-Zellen,
Getestete Reaktivität: Human, Hund	

Hintergrundinformationen

Intraflagellar transport (IFT), mediated by molecular motors and IFT particles, is an important transport process that occurs in the cilium and has been shown to be essential for the assembly and maintenance of cilia and flagella in many organisms. IFT particles are multi-subunit complexes of proteins that functions to move non-membrane-bound particles from the cell body to the tip of cilium or flagellum, then return them to the cell body. Transport towards the ciliary tip is regulated by the IFT complex B (IFT-B), consisting of at least 15 IFT proteins, in association with kinesin motors, whereas transport from the ciliary tip back to the base is executed by a dynein motor in association with the IFT complex A (IFT-A), currently known to be composed of six IFT proteins. IFT81 is a subunit of IFT complex B.It may play a role in development of the testis and spermatogenesis. There are some isoforms of IFT81 with 73-78 kDa and 43-50 kDa.

Lagerung

Lagerungsbedingungen:
Bei -20°C lagern. Vor Licht schützen. Nach dem Versand ein Jahr stabil.
Lagerungspuffer:
BS mit 50% Glycerin, 0,05% Proclin300, 0,5% BSA, pH 7,3.
Aliquotieren ist nicht notwendig bei -20°C Lagerung

*** 20ul-Größen enthalten 0.1% BSA

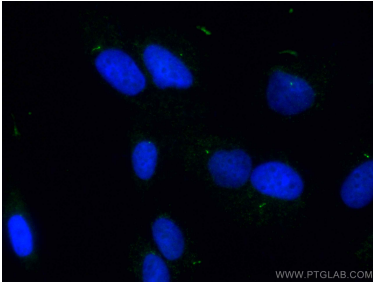
For technical support and original validation data for this product please contact:

T: 1 (888) 4PTGLAB (1-888-478-4522) (toll free in USA), or 1(312) 455-8498 (outside USA)

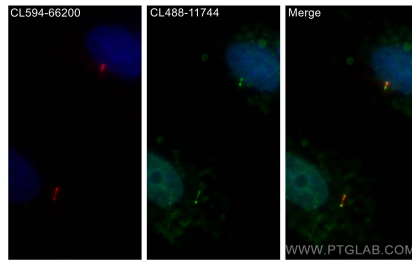
E: proteintech@ptglab.com
W: ptglab.com

This product is exclusively available under Proteintech Group brand and is not available to purchase from any other manufacturer.

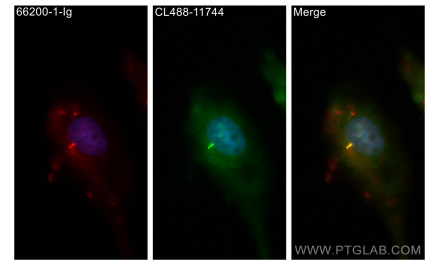
Ausgewählte Validierungsdaten



Immunofluorescent analysis of (4% PFA) fixed MDCK cells using CoraLite® Plus 488 IFT81 antibody (CL488-11744) at dilution of 1:200.



Immunofluorescent analysis of (4% PFA) fixed MDCK cells using CoraLite® Plus 488 IFT81 antibody (CL488-11744) at dilution of 1:50, CoraLite® 594 acetylated Tubulin(Lys40) antibody (CL594-66200, Clone: 7E5H8, red).



Immunofluorescent analysis of (4% PFA) fixed MDCK cells using CoraLite® Plus 488 IFT81 antibody (CL488-11744) at dilution of 1:200, acetylated Tubulin(Lys40) antibody (66200-1-Ig, Clone: 7E5H8, red).