

Nur für Forschungszwecke

IMPDH2 Polyklonaler Antikörper

Katalog-Nr.:CL488-12948

Vorgestelltes Produkt



Allgemeine Informationen

Katalog-Nr.: CL488-12948	GenBank-Zugangsnummer: BC012840	Reinigungsmethode: Antigen-Affinitätsreinigung
Größe: 100ul , Konzentration: 1000 µg/ml von3615 Nanodrop;	GeneID (NCBI): Vollständiger Name: IMP (inosine monophosphate) dehydrogenase 2	Empfohlene Verdünnungen: IF 1:50-1:500
Wirt: Kaninchen	Berechnete Masse: 514 aa, 56 kDa	Anregungs-/Emissionsmaxima- Wellenlängen: 493 nm / 522 nm
Isotyp: IgG	Beobachtete Masse: 56 kDa	
Immunogen Katalognummer: AG3632		

Anwendungen

Geprüfte Anwendungen: IF	Positivkontrollen: IF : HeLa-Zellen,
Getestete Reaktivität: Human, Maus, Ratte	

Hintergrundinformationen

IMPDH2, also named as IMPD2, belongs to the IMPDH/GMPR family. It is a rate limiting enzyme in the de novo synthesis of guanine nucleotides and therefore is involved in the regulation of cell growth. It may also have a role in the development of malignancy and the growth progression of some tumors. IMPDH2 is a key enzyme in the purine nucleotide biosynthetic pathway and constitutes a pivotal biological target for immunosuppressant and antiviral drugs. (PMID:21181270) IMPDH2 is highly enriched in RR(filamentous rods and rings). This antibody may have cross reaction with IMPDH1 due to the high homology.

Lagerung

Lagerungsbedingungen:
Bei -20°C lagern. Vor Licht schützen.
Lagerungspuffer:
BS mit 50% Glycerin, 0,05% Proclin300, 0,5% BSA, pH 7,3.
Aliquotieren ist nicht notwendig bei -20°C Lagerung

*** 20ul-Größen enthalten 0.1% BSA

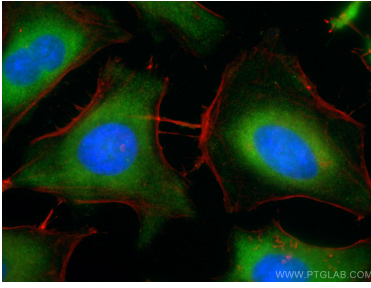
For technical support and original validation data for this product please contact:

T: 1 (888) 4PTGLAB (1-888-478-4522) (toll free
in USA), or 1(312) 455-8498 (outside USA)

E: proteintech@ptglab.com
W: ptglab.com

This product is exclusively available under Proteintech Group brand and is not available to purchase from any other manufacturer.

Ausgewählte Validierungsdaten



Immunofluorescent analysis of (-20°C Methanol) fixed HeLa cells using CoraLite® Plus 488 IMPDH2 antibody (CL488-12948) at dilution of 1:100, CoraLite®594 Beta Actin antibody (CL594-66009, Clone: 2D4H5, red).