

Nur für Forschungszwecke

# TFEB Polyklonaler Antikörper

Katalog-Nr.:CL488-13372

Vorgestelltes Produkt



## Allgemeine Informationen

<b>Katalog-Nr.:</b> CL488-13372	<b>GenBank-Zugangsnummer:</b> BC032448	<b>Reinigungsmethode:</b> Antigen-Affinitätsreinigung
<b>Größe:</b> 100ul , Konzentration: 1000 µg/ml von7942	<b>GeneID (NCBI):</b> Vollständiger Name: transcription factor EB	<b>Empfohlene Verdünnungen:</b> IF 1:50-1:500
<b>Nanodrop;</b>	<b>Berechnete Masse:</b> 476 aa, 53 kDa	<b>Anregungs-/Emissionsmaxima-Wellenlängen:</b> 493 nm / 522 nm
<b>Wirt:</b> Kaninchen	<b>Beobachtete Masse:</b> 65-70 kDa	
<b>Isotyp:</b> IgG		
<b>Immunogen Katalognummer:</b> AG4194		

## Anwendungen

<b>Geprüfte Anwendungen:</b> IF	<b>Positivkontrollen:</b> IF : HepG2-Zellen,
<b>Getestete Reaktivität:</b> Human, Maus, Ratte	

## Hintergrundinformationen

Transcription factor EB(TFEB) is one of the transcription factors that contain a basic HLH-ZIP domain(for DNA binding ) and HLH and ZIP domains( for loigomerization). TFEB specifically recognizes and binds to E-box sequences, which required dimerization with itself or another MiT/TFE family member. It plays a role in T-cell-dependent antibody responses to activated CD4+ T-cells and thymus-dependent humoral immunity once associated with TFE3. It also activates lysosomal gene by binding the CLEAR-box sequence in the regulatory region. It involves in the signal transduction processes required for normal vascularization of the placenta. This is a rabbit polyclonal antibody raised against the full length of human TFEB. The calcualted molecular weight of TFEB is 53 kDa, but modified TFEB is about 65-70 kDa (PMID: 12837690). TFEB mainly present in the cytoplasm (PubMed:23434374). Under aberrant lysosomal storage conditions, it translocates from the cytoplasm to the nucleus (PubMed:23434374). Fisetin increases the levels of TFEB localized in nuclei (PMID: 27112200).

## Lagerung

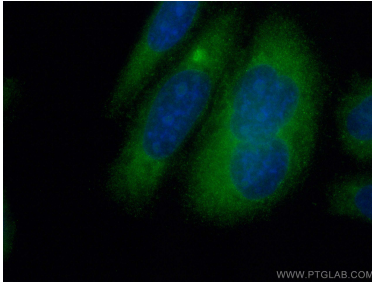
**Lagerungsbedingungen:**  
Bei -20°C lagern. Vor Licht schützen. Nach dem Versand ein Jahr stabil.  
**Lagerungspuffer:**  
BS mit 50% Glycerin, 0,05% Proclin300, 0,5% BSA, pH 7,3.  
**Aliquotieren ist nicht notwendig bei -20°C Lagerung**

**\*\*\* 20ul-Größen enthalten 0.1% BSA**

For technical support and original validation data for this product please contact:  
T: 1 (888) 4PTGLAB (1-888-478-4522) (toll free in USA), or 1(312) 455-8498 (outside USA)  
E: proteintech@ptglab.com  
W: ptglab.com

This product is exclusively available under Proteintech Group brand and is not available to purchase from any other manufacturer.

## Ausgewählte Validierungsdaten



Immunofluorescent analysis of (-20°C Ethanol) fixed HepG2 cells using CoraLite® Plus 488 TFEB antibody (CL488-13372) at dilution of 1:100.