

Nur für Forschungszwecke

IFT88 Polyklonaler Antikörper

Katalog-Nr.:CL488-13967

Vorgestelltes Produkt



Allgemeine Informationen

Katalog-Nr.: CL488-13967	GenBank-Zugangsnummer: BC030776	Reinigungsmethode: Antigen-Affinitätsreinigung
Größe: 100ul , Konzentration: 1000 µg/ml von8100 Nanodrop;	GeneID (NCBI): 1000	Empfohlene Verdünnungen: IF 1:50-1:500
Wirt: Kaninchen	Vollständiger Name: intraflagellar transport 88 homolog (Chlamydomonas)	Anregungs-/Emissionsmaxima- Wellenlängen: 493 nm / 522 nm
Isotyp: IgG	Berechnete Masse: 94 kDa	
Immunogen Katalognummer: AG4980	Beobachtete Masse: 88-95 kDa	

Anwendungen

Geprüfte Anwendungen: IF	Positivkontrollen: IF : MDCK-Zellen,
Getestete Reaktivität: Human, Hund, Maus, Ratte	

Hintergrundinformationen

Intraflagellar transport (IFT), mediated by molecular motors and IFT particles, is an important transport process that occurs in the cilium and has been shown to be essential for the assembly and maintenance of cilia and flagella in many organisms. IFT88 (intraflagellar transport protein 88; also known as TG737 or TTC10) is a component of IFT particles and required for cilium biogenesis. Defects in IFT88/Tg737 lead to polycystic kidney disease (11062270). IFT88 localizes to spindle poles during mitosis and is required for spindle orientation in mitosis (21441926). This antibody was raised against the C-terminal region of human IFT88 and can detect the endogenous level of IFT88.

Lagerung

Lagerungsbedingungen:
Bei -20°C lagern. Vor Licht schützen.
Lagerungspuffer:
BS mit 50% Glycerin, 0,05% Proclin300, 0,5% BSA, pH 7,3.
Aliquotieren ist nicht notwendig bei -20°C Lagerung

***** 20ul-Größen enthalten 0.1% BSA**

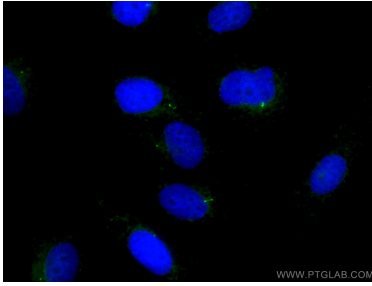
For technical support and original validation data for this product please contact:

T: 1 (888) 4PTGLAB (1-888-478-4522) (toll free
in USA), or 1(312) 455-8498 (outside USA)

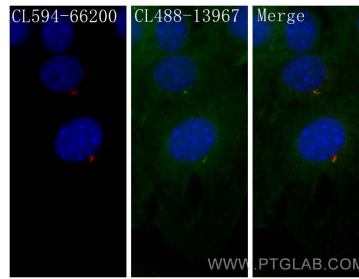
E: proteintech@ptglab.com
W: ptglab.com

This product is exclusively available under Proteintech Group brand and is not available to purchase from any other manufacturer.

Ausgewählte Validierungsdaten



Immunofluorescent analysis of (4% PFA) fixed MDCK cells using CoraLite® Plus 488 IFT88 antibody (CL488-13967) at dilution of 1:200.



Immunofluorescent analysis of (4% PFA) fixed C2C12 cells using CoraLite® Plus 488 IFT88 antibody (CL488-13967) at dilution of 1:200, CoraLite®594 acetylated Tubulin(Lys40) antibody (CL594-66200, Clone: 7E5H8, red).