

Nur für Forschungszwecke

MAVS; VISA Polyklonaler Antikörper

Katalog-Nr.:CL488-14341



Allgemeine Informationen

Katalog-Nr.: CL488-14341	GenBank-Zugangsnummer: BC044952	Reinigungsmethode: Antigen-Affinitätsreinigung
Größe: 100ul , Konzentration: 1000 µg/ml von57506	GeneID (NCBI): 57506	Empfohlene Verdünnungen: IF 1:50-1:500
Nanodrop;	Vollständiger Name: mitochondrial antiviral signaling protein	Anregungs-/Emissionsmaxima-Wellenlängen: 493 nm / 522 nm
Wirt: Kaninchen	Berechnete Masse: 57 kDa	
Isotyp: IgG	Beobachtete Masse: 50-55 kDa, 70-75 kDa	
Immunogen Katalognummer: AG5655		

Anwendungen

Geprüfte Anwendungen: IF	Positivkontrollen: IF : HeLa-Zellen,
Getestete Reaktivität: Human	

Hintergrundinformationen

Mitochondrial antiviral-signaling protein (MAVS) is also known as virus-induced-signaling adapter (VISA) or IFN beta promoter stimulator protein 1 (IPS-1), it is widely involved and required for innate immune defense against viruses. MAVS, present in T cells, monocytes, epithelial cells and hepatocytes, contains CARD and transmembrane domains which are essential for antiviral functions. MAVS is able to interact with various cellular proteins including DD \times 58/RIG-I, IFIH1/MDA5, TRAF2, TRAF6, TMEM173/MITA, IFIT3 and etc. This antibody is conjugated with CL488, Ex/Em 488 nm/515 nm.

Lagerung

Lagerungsbedingungen:
Bei -20°C lagern. Vor Licht schützen.
Lagerungspuffer:
BS mit 50% Glycerin, 0,05% Proclin300, 0,5% BSA, pH 7,3.
Aliquotieren ist nicht notwendig bei -20°C Lagerung

***** 20ul-Größen enthalten 0.1% BSA**

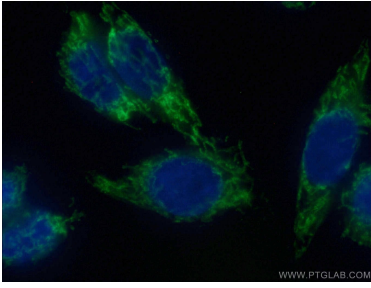
For technical support and original validation data for this product please contact:

T: 1 (888) 4PTGLAB (1-888-478-4522) (toll free in USA), or 1(312) 455-8498 (outside USA)

E: proteintech@ptglab.com
W: ptglab.com

This product is exclusively available under Proteintech Group brand and is not available to purchase from any other manufacturer.

Ausgewählte Validierungsdaten



Immunofluorescent analysis of (4% PFA) fixed HeLa cells using CL488-14341 (MAVS; VISA antibody) at dilution of 1:50.