

Nur für Forschungszwecke

REEP5 Polyklonaler Antikörper

Katalog-Nr.:CL488-14643

Vorgestelltes Produkt



Allgemeine Informationen

Katalog-Nr.: CL488-14643	GenBank-Zugangsnummer: BC065926	Reinigungsmethode: Antigen-affinitätsgereinigt
Größe: 100ul , Konzentration: 1000 µg/ml von7905 Nanodrop;	GeneID (NCBI): receptor accessory protein 5	Empfohlene Verdünnungen: IF 1:50-1:500
Wirt: Kaninchen	Vollständiger Name: receptor accessory protein 5	Anregungs-/Emissionsmaxima-Wellenlängen: 493 nm / 522 nm
Isotyp: IgG	Berechnete Masse: 21 kDa	
Immunogen Katalognummer: AG6229	Beobachtete Masse: 18-21 kDa	

Anwendungen

Geprüfte Anwendungen: FC (Intra), IF	Positivkontrollen: IF : A549-Zellen,
Getestete Reaktivität: Human, Maus, Ratte	

Hintergrundinformationen

REEP5 (receptor expression-enhancing protein 5), also named as C5orf18, DP1 or TB2, is a membrane protein belonging to DP1/Yop1p protein family. All REEP proteins contain a conserved TB2/DP1, HVA22 domain which is involved in intracellular trafficking and secretion (PMID: 19123125). REEP5 is expressed in circumvallate papillae and testis, and may have the function to influence functional cell surface expression of taste receptors (PMID: 16720576). REEP5 can interact with atlastins (ATL1 and ATL2) which are involved in modulating the structure of ER network (PMID: 19665976).

Lagerung

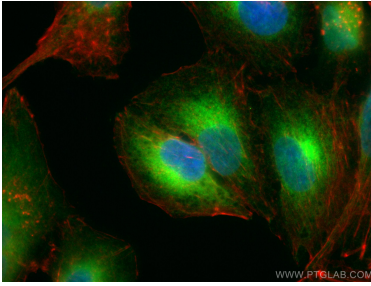
Lagerungsbedingungen:
Bei -20°C lagern. Vor Licht schützen.
Lagerungspuffer:
BS mit 50% Glycerin, 0,05% Proclin300, 0,5% BSA, pH 7,3.
Aliquotieren ist nicht notwendig bei -20°C Lagerung

***** 20ul-Größen enthalten 0.1% BSA**

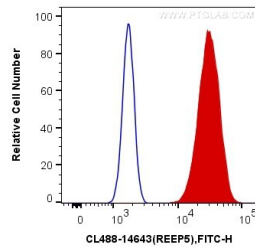
For technical support and original validation data for this product please contact:
T: 1 (888) 4PTGLAB (1-888-478-4522) (toll free in USA), or 1(312) 455-8498 (outside USA)
E: proteintech@ptglab.com
W: ptglab.com

This product is exclusively available under Proteintech Group brand and is not available to purchase from any other manufacturer.

Ausgewählte Validierungsdaten



Immunofluorescent analysis of (4% PFA) fixed A549 cells using CoraLite® Plus 488-conjugated REEP5 antibody (CL488-14643) at dilution of 1:100. F-actin is stained using CL555-phalloidin (red) and DNA is stained by DAPI (blue).



1X10⁶ HeLa cells were intracellularly stained with 0.4 ug CoraLite® Plus 488 Anti-Human REEP5 (CL488-14643) (red), or 0.4 ug Control Antibody. Cells were fixed with 4% PFA and permeabilized with Flow Cytometry Perm Buffer (PF00011-C).