

Nur für Forschungszwecke

SPAG5 Polyklonaler Antikörper

Katalog-Nr.:CL488-14726

Vorgestelltes Produkt



Allgemeine Informationen

Katalog-Nr.: CL488-14726	GenBank-Zugangsnummer: BC000322	Reinigungsmethode: Antigen-Affinitätsreinigung
Größe: 100ul , Konzentration: 1000 µg/ml von10615 Nanodrop;	GeneID (NCBI): vollständiger Name: sperm associated antigen 5	Empfohlene Verdünnungen: IF 1:50-1:500
Wirt: Kaninchen	Berechnete Masse: 134 kDa	Anregungs-/Emissionsmaxima-Wellenlängen: 493 nm / 522 nm
Isotyp: IgG	Beobachtete Masse: 135 kDa, 150 kDa	
Immunogen Katalognummer: AG6485		

Anwendungen

Geprüfte Anwendungen: FC (Intra), IF	Positivkontrollen: IF : HeLa-Zellen,
Getestete Reaktivität: Human, Maus	

Hintergrundinformationen

SPAG5, also named as MAP126, Astrin and Deepest, is necessary for normal spindle formation during mitosis. It is highly expressed in testis. SPAG5 has different localization in somatic versus male germ cells suggesting the possibility of different function. This antibody is specific to SPAG5.

Lagerung

Lagerungsbedingungen:
Bei -20°C lagern. Vor Licht schützen.
Lagerungspuffer:
BS mit 50% Glycerin, 0,05% Proclin300, 0,5% BSA, pH 7,3.
Aliquotieren ist nicht notwendig bei -20°C Lagerung

*** 20ul-Größen enthalten 0.1% BSA

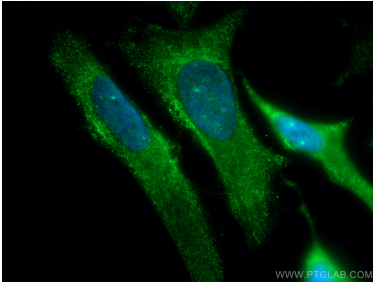
For technical support and original validation data for this product please contact:

T: 1 (888) 4PTGLAB (1-888-478-4522) (toll free in USA), or 1(312) 455-8498 (outside USA)

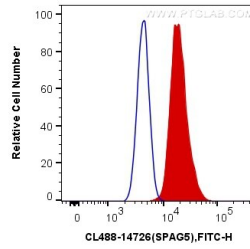
E: proteintech@ptglab.com
W: ptglab.com

This product is exclusively available under Proteintech Group brand and is not available to purchase from any other manufacturer.

Ausgewählte Validierungsdaten



Immunofluorescent analysis of (-20°C Methanol) fixed HeLa cells using CoraLite® Plus 488 SPAG5 antibody (CL488-14726) at dilution of 1:200.



1X10⁶ HeLa cells were intracellularly stained with 0.4 ug CoraLite® Plus 488 Anti-Human SPAG5 (CL488-14726) (red), or 0.4 ug Control Antibody. Cells were fixed with 4% PFA and permeabilized with Flow Cytometry Perm Buffer (PF00011-C).