

Nur für Forschungszwecke

# UCHL1/PGP9.5 Polyklonaler Antikörper



Katalog-Nr.:CL488-14730

Vorgestelltes Produkt

## Allgemeine Informationen

<b>Katalog-Nr.:</b> CL488-14730	<b>GenBank-Zugangsnummer:</b> BC000332	<b>Reinigungsmethode:</b> Antigen-Affinitätsreinigung
<b>Größe:</b> 100ul , Konzentration: 1000 µg/ml von7345 Nanodrop;	<b>GeneID (NCBI):</b> Vollständiger Name: ubiquitin carboxyl-terminal esterase L1 (ubiquitin thiolesterase)	<b>Empfohlene Verdünnungen:</b> IF 1:50-1:500 <b>Anregungs-/Emissionsmaxima- Wellenlängen:</b> 493 nm / 522 nm
<b>Wirt:</b> Kaninchen	<b>Berechnete Masse:</b> 25 kDa	
<b>Isotyp:</b> IgG	<b>Beobachtete Masse:</b> 27 kDa	
<b>Immunogen Katalognummer:</b> AG6490		

## Anwendungen

<b>Geprüfte Anwendungen:</b> FC (Intra), IF	<b>Positivkontrollen:</b> IF : Maushirngewebe,
<b>Getestete Reaktivität:</b> Human, Maus, Ratte	

## Hintergrundinformationen

UCHL1(Ubiquitin carboxyl-terminal hydrolase isozyme L1) is a member of a gene family whose products hydrolyze small C-terminal adducts of ubiquitin to generate the ubiquitin monomer. Expression of UCHL1 is highly specific to neurons and to cells of the diffuse neuroendocrine system and their tumors. It is present in all neurons(PMID: 6343558). This protein is present in brain at concentrations at least 50 times greater than in other organs and is a major protein component of neuronal cytoplasm (PMID:7217993). And UCHL1 is a Parkinson's disease susceptibility gene (PMID:15048890).

## Lagerung

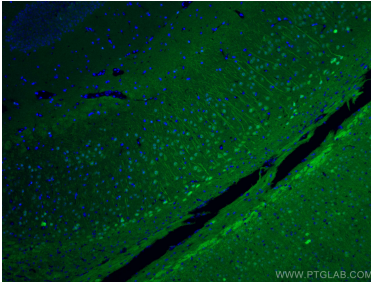
**Lagerungsbedingungen:**  
Bei -20°C lagern. Vor Licht schützen.  
**Lagerungspuffer:**  
BS mit 50% Glycerin, 0,05% Proclin300, 0,5% BSA, pH 7,3.  
**Aliquotieren ist nicht notwendig bei -20°C Lagerung**

**\*\*\* 20ul-Größen enthalten 0.1% BSA**

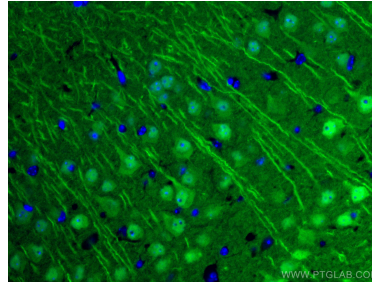
For technical support and original validation data for this product please contact:  
T: 1 (888) 4PTGLAB (1-888-478-4522) (toll free in USA), or 1(312) 455-8498 (outside USA)  
E: proteintech@ptglab.com  
W: ptglab.com

This product is exclusively available under Proteintech Group brand and is not available to purchase from any other manufacturer.

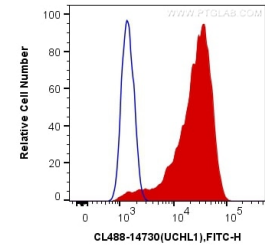
## Ausgewählte Validierungsdaten



Immunofluorescent analysis of (4% PFA) fixed mouse brain tissue using Coralite® Plus 488 UCHL1/PGP9.5 antibody (CL488-14730) at dilution of 1:200.



Immunofluorescent analysis of (4% PFA) fixed mouse brain tissue using Coralite® Plus 488 UCHL1/PGP9.5 antibody (CL488-14730) at dilution of 1:200.



$1 \times 10^6$  Y79 cells were intracellularly stained with 0.4  $\mu$ g Coralite® Plus 488 Anti-Human UCHL1/PGP9.5 (CL488-14730) (red), or 0.4  $\mu$ g Control Antibody. Cells were fixed with 4% PFA and permeabilized with Flow Cytometry Perm Buffer (PF00011-C).