

Nur für Forschungszwecke

CAPRIN1 Polyklonaler Antikörper

Katalog-Nr.:CL488-15112

Vorgestelltes Produkt



Allgemeine Informationen

Katalog-Nr.: CL488-15112	GenBank-Zugangsnummer: BC001731	Reinigungsmethode: Antigen-Affinitätsreinigung
Größe: 100ul , Konzentration: 1000 µg/ml von4076 Nanodrop;	GeneID (NCBI): Vollständiger Name: cell cycle associated protein 1	Empfohlene Verdünnungen: IF 1:50-1:500
Wirt: Kaninchen	Berechnete Masse: 78 kDa	Anregungs-/Emissionsmaxima-Wellenlängen: 493 nm / 522 nm
Isotyp: IgG	Beobachtete Masse: 116 kDa	
Immunogen Katalognummer: AG7099		

Anwendungen

Geprüfte Anwendungen: FC (Intra), IF	Positivkontrollen: IF : HeLa-Zellen,
Getestete Reaktivität: Human, Maus, Ratte	

Hintergrundinformationen

CAPRIN1 (Caprin-1) is a cytoplasmic phosphoprotein which may regulate the transport and translation of mRNAs of proteins involved in synaptic plasticity in neurons and cell proliferation and migration in multiple cell types. Its levels, except in the brain, are tightly correlated with cellular proliferation. Suppression of expression of human Caprin-1 resulted in slowing of the proliferation rate, which suggests its essential for normal cellular proliferation.

Lagerung

Lagerungsbedingungen:
Bei -20°C lagern. Vor Licht schützen. Nach dem Versand ein Jahr stabil.
Lagerungspuffer:
BS mit 50% Glycerin, 0,05% Proclin300, 0,5% BSA, pH 7,3.
Aliquotieren ist nicht notwendig bei -20°C Lagerung

*** 20ul-Größen enthalten 0.1% BSA

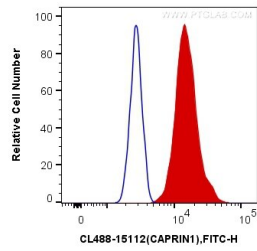
For technical support and original validation data for this product please contact:

T: 1 (888) 4PTGLAB (1-888-478-4522) (toll free in USA), or 1(312) 455-8498 (outside USA)

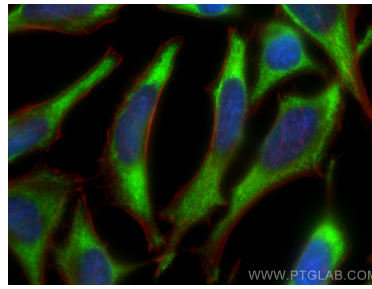
E: proteintech@ptglab.com
W: ptglab.com

This product is exclusively available under Proteintech Group brand and is not available to purchase from any other manufacturer.

Ausgewählte Validierungsdaten



1×10^6 HeLa cells were intracellularly stained with 0.4 μ g CoraLite® Plus 488 Anti-Human CAPRIN1 (CL488-15112) (red), or 0.4 μ g Control Antibody. Cells were fixed with 4% PFA and permeabilized with Flow Cytometry Perm Buffer (PF00011-C).



Immunofluorescent analysis of (-20°C Ethanol) fixed HeLa cells using CoraLite® Plus 488 CAPRIN1 antibody (CL488-15112) at dilution of 1:200, CL594-Phalloidin (red).