

Nur für Forschungszwecke

# CPT1A Polyklonaler Antikörper

Katalog-Nr.:CL488-15184

Vorgestelltes Produkt



## Allgemeine Informationen

|   |   |  |
|---|---|--|
| <b>Katalog-Nr.:</b><br>CL488-15184                                      | <b>GenBank-Zugangsnummer:</b><br>BC000185                               | <b>Reinigungsmethode:</b><br>Antigen-Affinitätsreinigung           |
| <b>Größe:</b><br>100ul , Konzentration: 1000 µg/ml von1374<br>Nanodrop; | <b>GeneID (NCBI):</b><br>1374   | <b>Anregungs-/Emissionsmaxima-Wellenlängen:</b><br>493 nm / 522 nm |
| <b>Wirt:</b><br>Kaninchen   | <b>Vollständiger Name:</b><br>carnitine palmitoyltransferase 1A (Liver) |  |
| <b>Isotyp:</b><br>IgG   | <b>Berechnete Masse:</b><br>88 kDa                                      |  |
| <b>Immunogen Katalognummer:</b><br>AG7202                               | <b>Beobachtete Masse:</b><br>86 kDa                                     |  |

## Anwendungen

**Geprüfte Anwendungen:**  
FC (Intra)

**Getestete Reaktivität:**  
Human, Maus, Ratte

## Hintergrundinformationen

CPT1A, also named as CPT1, CPT1-L and L-CPTI, belongs to the carnitine/choline acetyltransferase family. It is localized on chromosome 11q13.1-2. Carnitine palmitoyltransferase (CPT) deficiencies are common disorders of mitochondrial fatty acid oxidation. The CPT system is made up of two separate proteins located in the outer (CPT1) and inner (CPT2) mitochondrial membranes. CPT1A is an active form of related liver-type carnitine palmitoyltransferase I. (PMID: 11001805). CPT1A deficiency presents as recurrent attacks of fasting hypoketotic hypoglycemia. (PMID: 15363638). This antibody can bind the close sequences genes.

## Lagerung

**Lagerungsbedingungen:**  
Bei -20°C lagern. Vor Licht schützen.

**Lagerungspuffer:**  
BS mit 50% Glycerin, 0,05% Proclin300, 0,5% BSA, pH 7,3.

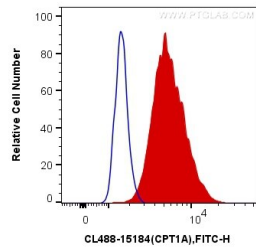
Aliquotieren ist nicht notwendig bei -20°C Lagerung

\*\*\* 20ul-Größen enthalten 0.1% BSA

For technical support and original validation data for this product please contact:  
T: 1 (888) 4PTGLAB (1-888-478-4522) (toll free in USA), or 1(312) 455-8498 (outside USA)  
E: proteintech@ptglab.com  
W: ptglab.com

This product is exclusively available under Proteintech Group brand and is not available to purchase from any other manufacturer.

## Ausgewählte Validierungsdaten



1X10<sup>6</sup> HeLa cells were intracellularly stained with 0.4 ug Coralite® Plus 488 Anti-Human CPT1A (CL488-15184) (red), or 0.4 ug Control Antibody. Cells were fixed with 4% PFA and permeabilized with Flow Cytometry Perm Buffer (PF00011-C).