

Nur für Forschungszwecke

HLA class I ABC Polyklonaler Antikörper

Katalog-Nr.:CL488-15240



Allgemeine Informationen

Katalog-Nr.: CL488-15240	GenBank-Zugangsnummer: BC003069	Reinigungsmethode: Antigen-Affinitätsreinigung
Größe: 100ul , Konzentration: 1000 µg/ml von3105 Nanodrop;	GeneID (NCBI): 3105	Empfohlene Verdünnungen: IF 1:50-1:500
Wirt: Kaninchen	Vollständiger Name: major histocompatibility complex, class I, A	Anregungs-/Emissionsmaxima- Wellenlängen: 493 nm / 522 nm
Isotyp: IgG	Berechnete Masse: 41 kDa	
Immunogen Katalognummer: AG7370	Beobachtete Masse: 44 kDa	

Anwendungen

Geprüfte Anwendungen: FC, IF	Positivkontrollen: IF : HepG2-Zellen,
Getestete Reaktivität: Human	

Hintergrundinformationen

Human major histocompatibility complex (MHC) antigens, also referred to as human leukocyte antigens (HLA), are encoded by genes located on the short arm of chromosome 6 (6p21.3). There are two classes of HLA antigens: class I (HLA-A, B and C) and class II (HLA-D). This class I molecules are polymorphic membrane glycoproteins composed of a heavy (alpha) chain (44 kDa) which is encoded by a HLA class I gene (HLA-A, B or C), and β 2-microglobulin light (beta) chain (12 kDa). They are involved in the presentation of foreign antigens to the immune system. (PMID: 667938; 3375250)

Lagerung

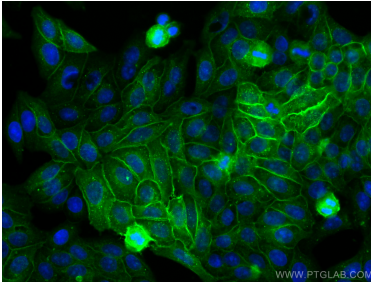
Lagerungsbedingungen:
Bei -20°C lagern. Vor Licht schützen.
Lagerungspuffer:
BS mit 50% Glycerin, 0,05% Proclin300, 0,5% BSA, pH 7,3.
Aliquotieren ist nicht notwendig bei -20°C Lagerung

***** 20ul-Größen enthalten 0.1% BSA**

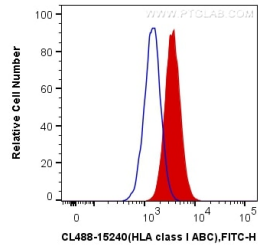
For technical support and original validation data for this product please contact:
T: 1 (888) 4PTGLAB (1-888-478-4522) (toll free in USA), or 1(312) 455-8498 (outside USA) E: proteintech@ptglab.com W: ptglab.com

This product is exclusively available under Proteintech Group brand and is not available to purchase from any other manufacturer.

Ausgewählte Validierungsdaten



Immunofluorescent analysis of (-20°C Methanol) fixed HepG2 cells using CoraLite® Plus 488 HLA class I ABC antibody (CL488-15240) at dilution of 1:200.



1X10⁶ HepG2 cells were surface stained with 0.4 ug CoraLite® Plus 488 Anti-Human HLA class I ABC (CL488-15240) (red), or 0.4 ug Control Antibody. Cells were not fixed.