

Nur für Forschungszwecke

Glucagon Polyklonaler Antikörper

Katalog-Nr.:CL488-15954



Allgemeine Informationen

Katalog-Nr.: CL488-15954	GenBank-Zugangsnummer: BC005278	Reinigungsmethode: Antigen-Affinitätsreinigung
Größe: 100ul , Konzentration: 1000 µg/ml von2641 Nanodrop;	GeneID (NCBI): glucaagon	Empfohlene Verdünnungen: IF 1:50-1:500
Wirt: Kaninchen	Vollständiger Name: glucaagon	Anregungs-/Emissionsmaxima-Wellenlängen: 493 nm / 522 nm
Isotyp: IgG	Berechnete Masse: 180 aa, 21 kDa	
Immunogen Katalognummer: AG8677		

Anwendungen

Geprüfte Anwendungen: IF	Positivkontrollen: IF : Maus-Pankreasgewebe,
Getestete Reaktivität: Human, Maus, Ratte	

Hintergrundinformationen

Glucagon is a 29-amino acid peptide hormone secreted from the pancreatic alpha cells with a powerful stimulatory effect on hepatic glucose production acting to increase plasma glucose levels. Glucagon is best known as the counter-regulatory hormone to insulin, and normal glucose homeostasis depends largely on the balanced secretion of insulin and glucagon from the pancreatic beta and alpha cells, respectively. The regulation of glucose metabolism by glucagon is mediated by its direct action on the peripheral tissues such as the liver and also by the brain. Glucagon is also released postprandially in a transient manner, which was shown to be involved in inhibition of food intake via reduction of meal size.

Lagerung

Lagerungsbedingungen:
Bei -20°C lagern. Vor Licht schützen.
Lagerungspuffer:
BS mit 50% Glycerin, 0,05% Proclin300, 0,5% BSA, pH 7,3.
Aliquotieren ist nicht notwendig bei -20°C Lagerung

*** 20ul-Größen enthalten 0.1% BSA

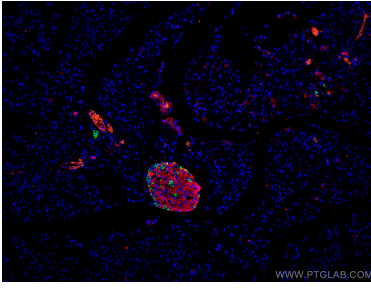
For technical support and original validation data for this product please contact:

T: 1 (888) 4PTGLAB (1-888-478-4522) (toll free in USA), or 1(312) 455-8498 (outside USA)

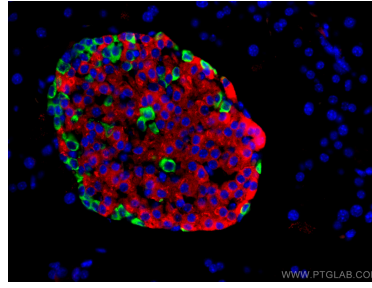
E: proteintech@ptglab.com
W: ptglab.com

This product is exclusively available under Proteintech Group brand and is not available to purchase from any other manufacturer.

Ausgewählte Validierungsdaten



Immunofluorescent analysis of (4% PFA) fixed mouse pancreas tissue using CoraLite® Plus 488 Glucagon antibody (CL488-15954) at dilution of 1:200, CoraLite®594 INS antibody (CL594-15848, red).



Immunofluorescent analysis of (4% PFA) fixed mouse pancreas tissue using CoraLite® Plus 488 Glucagon antibody (CL488-15954) at dilution of 1:200, CoraLite®594 INS antibody (CL594-15848, red).