

Nur für Forschungszwecke

Desmin Polyklonaler Antikörper

Katalog-Nr.:CL488-16520



Allgemeine Informationen

Katalog-Nr.: CL488-16520	GenBank-Zugangsnummer: BC032116	Reinigungsmethode: Antigen-Affinitätsreinigung
Größe: 100ul , Konzentration: 1000 µg/ml von1674 Nanodrop;	GeneID (NCBI): von1674	Anregungs-/Emissionsmaxima- Wellenlängen: 493 nm / 522 nm
Wirt: Kaninchen	Vollständiger Name: desmin	
Isotyp: IgG	Berechnete Masse: 470 aa, 54 kDa	
Immunogen Katalognummer: AG9742	Beobachtete Masse: 52-53 kDa	

Anwendungen

Geprüfte Anwendungen:
FC (Intra), IF

Getestete Reaktivität:
Human, Maus, Ratte

Hintergrundinformationen

Desmin is the main intermediate filament protein in skeletal and cardiac muscle cells and is essential for both the structural integrity and the survival of muscle cells. As an abundant muscle-specific protein, desmin has been widely used as a marker of muscle derived tumors. Anti-desmin is also valuable in the differential diagnosis of tumors of uncertain origin.

Lagerung

Lagerungsbedingungen:
Bei -20°C lagern. Vor Licht schützen.

Lagerungspuffer:
BS mit 50% Glycerin, 0,05% Proclin300, 0,5% BSA, pH 7,3.

Aliquotieren ist nicht notwendig bei -20°C Lagerung

***** 20ul-Größen enthalten 0.1% BSA**

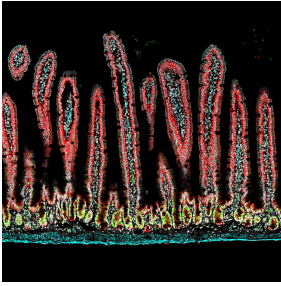
For technical support and original validation data for this product please contact:

T: 1 (888) 4PTGLAB (1-888-478-4522) (toll free
in USA), or 1(312) 455-8498 (outside USA)

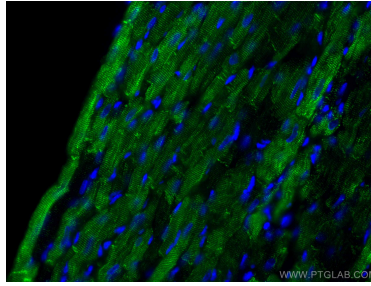
E: proteintech@ptglab.com
W: ptglab.com

This product is exclusively available under Proteintech Group brand and is not available to purchase from any other manufacturer.

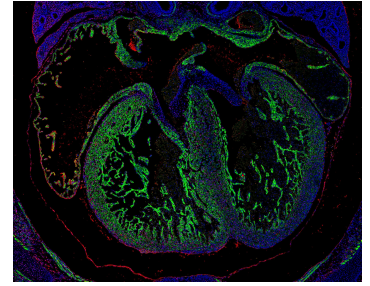
Ausgewählte Validierungsdaten



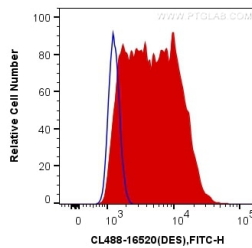
Adult mouse small intestine was co-stained with desmin (CL488-16520, in cyan), E-cadherin (20874-1-AP, in red), and PCNA (60097-1-Ig, in green). Desmin marks the stromal cells and smooth muscle, E-cadherin marks the gut epithelial cells, and PCNA marks proliferating cells. The image was created in paid partnership with @Immunofluorescence on Instagram.



Immunofluorescent analysis of (4% PFA) fixed rat heart tissue using CoraLite® Plus 488 Desmin antibody (CL488-16520) at dilution of 1:100.



E14.5 FFPE mouse heart stained for Desmin (green, Cat. No CL488-16520) and PCNA (red, Cat. No 60097-1-Ig). Desmin was conjugated to CoraLite-488 fluorescent dye and stains cardiomyocytes (heart muscle cells). PCNA stains proliferating cells, which are numerous in the developing heart. In this image, the four chambers of the heart can be easily visualized. Image credit: @Immunofluorescence on Instagram.



1X10⁶ C2C12 cells were intracellularly stained with 0.4 ug CoraLite® Plus 488 Anti-Human Desmin (CL488-16520) (red), or 0.4 ug Control Antibody. Cells were fixed with 4% PFA and permeabilized with Flow Cytometry Perm Buffer (PF00011-C).