

Nur für Forschungszwecke

MAP2 Polyklonaler Antikörper

Katalog-Nr.:CL488-17490

1 Publikationen



Allgemeine Informationen

Katalog-Nr.: CL488-17490	GenBank-Zugangsnummer: BC038857	Reinigungsmethode: Antigen-Affinitätsreinigung
Größe: 100ul, Konzentration: 1000 µg/ml von 4133	GeneID (NCBI): microtubule-associated protein 2	Empfohlene Verdünnungen: IF 1:50-1:500
Nanodrop;	Vollständiger Name: microtubule-associated protein 2	Anregungs-/Emissionsmaxima-Wellenlängen: 493 nm / 522 nm
Wirt: Kaninchen	Berechnete Masse: 200 kDa	
Isotyp: IgG	Beobachtete Masse:	
Immunogen Katalognummer: AG11580		

Anwendungen

Geprüfte Anwendungen: IF	Positivkontrollen: IF : Rattenhirngewebe,
Getestete Reaktivität: Human, Maus, Ratte	
Zitierte Arten: Maus	

Hintergrundinformationen

MAP2 (microtubule-associated protein 2) is a cytoskeleton protein abundant in brain and has important role in neuronal morphogenesis. Multiple high MW and low MW MAP2 isoforms are expressed within proximal segment of axons, dendrites, and cell bodies. The expression of MAP2 is regulated in both a tissue- and developmentally specific manner. The 280 kDa MAP2B is present throughout rat brain development, and the slightly larger MAP2A appears first during the end of the second week of postnatal life. MAP2C, composed of several bands of about 70 kDa, is present during early brain development, and largely disappears from the mature brain except for the retina, olfactory bulb, and cerebellum. In addition, some isoforms with lower MW around 50-60 kDa also exist. MAP2 antibodies have been widely used to mark the neuron or dendrite formation. This antibody can recognize both high MW and low MW isoforms of MAP2.

Bemerkenswerte Veröffentlichungen

Verfasser	Pubmed ID	Journal	Anwendung
Korrapati V Sathyaikumar	35204197	Antioxidants (Basel)	

Lagerung

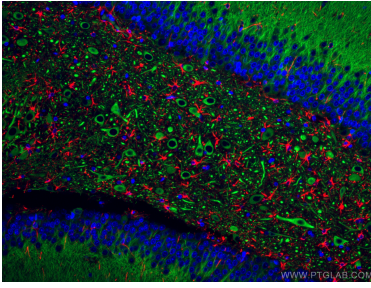
Lagerungsbedingungen:
Bei -20°C lagern. Vor Licht schützen.
Lagerungspuffer:
BS mit 50% Glycerin, 0,05% Proclin300, 0,5% BSA, pH 7,3.
Aliquotieren ist nicht notwendig bei -20°C Lagerung

*** 20ul-Größen enthalten 0.1% BSA

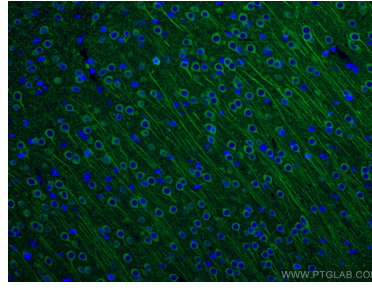
For technical support and original validation data for this product please contact:
T: 1 (888) 4PTGLAB (1-888-478-4522) (toll free in USA), or 1(312) 455-8498 (outside USA)
E: proteintech@ptglab.com
W: ptglab.com

This product is exclusively available under Proteintech Group brand and is not available to purchase from any other manufacturer.

Ausgewählte Validierungsdaten



Immunofluorescent analysis of (4% PFA) fixed rat brain tissue using CoraLite® Plus 488 MAP2 antibody (CL488-17490) at dilution of 1:200, CoraLite®594 GFAP antibody (CL594-16825, red), DAPI (blue).



Immunofluorescent analysis of (4% PFA) fixed rat brain tissue using CoraLite® Plus 488 MAP2 antibody (CL488-17490) at dilution of 1:200. DAPI (blue).