

Nur für Forschungszwecke

# IIPR1-specific Polyklonaler Antikörper

Katalog-Nr.:CL488-19962



## Allgemeine Informationen

|   |  |  |
|---|--|--|
| <b>Katalog-Nr.:</b><br>CL488-19962                        | <b>GenBank-Zugangsnummer:</b><br>NM_001099952                              | <b>Reinigungsmethode:</b><br>Antigen-Affinitätsreinigung           |
| <b>Größe:</b><br>100ul, Konzentration: 1000 µg/ml von3708 | <b>GeneID (NCBI):</b><br>3708  | <b>Empfohlene Verdünnungen:</b><br>IF 1:50-1:500                   |
| <b>Nanodrop;</b>  | <b>Vollständiger Name:</b><br>inositol 1,4,5-triphosphate receptor, type 1 | <b>Anregungs-/Emissionsmaxima-Wellenlängen:</b><br>493 nm / 522 nm |
| <b>Wirt:</b><br>Kaninchen                                 | <b>Berechnete Masse:</b><br>314 kDa  |  |
| <b>Isotyp:</b><br>IgG                                     | <b>Beobachtete Masse:</b><br>290-300 kDa                                   |  |

## Anwendungen

|   |   |
|---|---|
| <b>Geprüfte Anwendungen:</b><br>FC (Intra), IF      | <b>Positivkontrollen:</b><br>IF : Maushirngewebe, |
| <b>Getestete Reaktivität:</b><br>Human, Maus, Ratte |   |

## Hintergrundinformationen

IIPR1, also named as INSP3R1 and IP3R, belongs to the InsP3 receptor family. It is a receptor for inositol 1,4,5-trisphosphate which is a second messenger that mediates the release of intracellular calcium. Defects in IIPR1 are the cause of spinocerebellar ataxia type 15 (SCA15). The antibody has no cross reaction with IIPR2 and IIPR3.

## Lagerung

**Lagerungsbedingungen:**  
Bei -20°C lagern. Vor Licht schützen. Nach dem Versand ein Jahr stabil.  
**Lagerungspuffer:**  
BS mit 50% Glyzerin, 0,05% Proclin300, 0,5% BSA, pH 7,3.  
Aliquotieren ist nicht notwendig bei -20°C Lagerung

\*\*\* 20ul-Größen enthalten 0.1% BSA

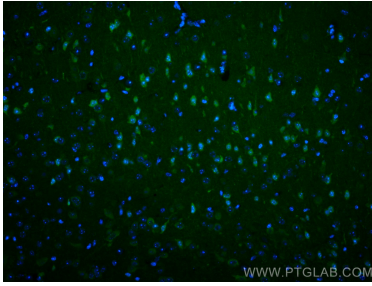
For technical support and original validation data for this product please contact:

T: 1 (888) 4PTGLAB (1-888-478-4522) (toll free in USA), or 1(312) 455-8498 (outside USA)

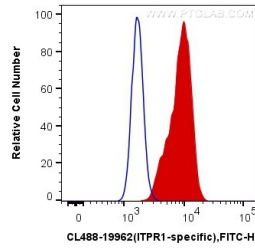
E: proteintech@ptglab.com  
W: ptglab.com

This product is exclusively available under Proteintech Group brand and is not available to purchase from any other manufacturer.

## Ausgewählte Validierungsdaten



Immunofluorescent analysis of (4% PFA) fixed mouse brain tissue using Coralite® Plus 488 ITPR1-specific antibody (CL488-19962) at dilution of 1:200.



1X10<sup>6</sup> HepG2 cells were intracellularly stained with 0.4 ug Coralite® Plus 488 Anti-Human ITPR1-specific (CL488-19962) (red), or 0.4 ug Control Antibody. Cells were fixed with 4% PFA and permeabilized with Flow Cytometry Perm Buffer (PF00011-C).