

Nur für Forschungszwecke

# LDHA-Specific Polyklonaler Antikörper



Katalog-Nr.:CL488-19987

Vorgestelltes Produkt

## Allgemeine Informationen

Katalog-Nr.:

CL488-19987

Größe:

100ul, Konzentration: 1000 µg/ml von3939

Nanodrop;

Wirt:

Kaninchen

Isotyp:

IgG

GenBank-Zugangsnummer:

NM\_005566

GeneID (NCBI):

3939

Vollständiger Name:

lactate dehydrogenase A

Berechnete Masse:

37 kDa

Beobachtete Masse:

32-37 kDa

Reinigungsmethode:

Antigen-Affinitätsreinigung

Empfohlene Verdünnungen:

IF 1:50-1:500

Anregungs-/Emissionsmaxima-

Wellenlängen:

493 nm / 522 nm

## Anwendungen

Geprüfte Anwendungen:

FC (Intra), IF

Getestete Reaktivität:

Human, Maus, Ratte

Positivkontrollen:

IF : HepG2-Zellen,

## Hintergrundinformationen

Lactate dehydrogenase (LDH) is composed of A subunits predominate in skeletal muscle and B subunits are abundantly produced in brain and heart. The LDHA (lactate dehydrogenase A) and COPB1 (coatomer protein complex, subunit beta 1) genes, are involved in energy metabolism and protein transport processes. Both genes might play important roles in muscle development. It has some isoforms with the molecular mass of 27-40 kDa and can form a homotetramer(PMID:11276087). This antibody is specific to LDHA and has no cross reaction to LDHB and LDHC.

## Lagerung

Lagerungsbedingungen:

Bei -20°C lagern. Vor Licht schützen.

Lagerungspuffer:

BS mit 50% Glycerin, 0,05% Proclin300, 0,5% BSA, pH 7,3.

Aliquotieren ist nicht notwendig bei -20°C Lagerung

\*\*\* 20ul-Größen enthalten 0.1% BSA

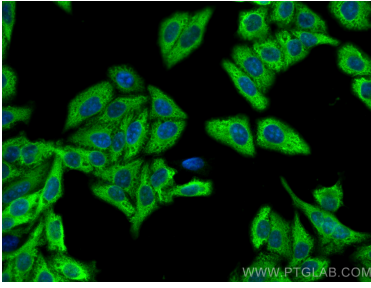
For technical support and original validation data for this product please contact:

T: 1 (888) 4PTGLAB (1-888-478-4522) (toll free in USA), or 1(312) 455-8498 (outside USA)

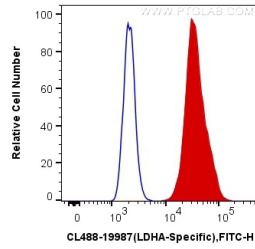
E: [proteintech@ptglab.com](mailto:proteintech@ptglab.com)  
W: [ptglab.com](http://ptglab.com)

This product is exclusively available under Proteintech Group brand and is not available to purchase from any other manufacturer.

## Ausgewählte Validierungsdaten



Immunofluorescent analysis of (-20°C Methanol) fixed HepG2 cells using CoraLite® Plus 488 LDHA-Specific antibody (CL488-19987) at dilution of 1:200.



1X10<sup>6</sup> HepG2 cells were intracellularly stained with 0.4 ug CoraLite® Plus 488 Anti-Human LDHA-Specific (CL488-19987) (red), or 0.4 ug Control Antibody. Cells were fixed with 4% PFA and permeabilized with Flow Cytometry Perm Buffer (PF00011-C).