

Nur für Forschungszwecke

IGF2R-Specific Polyklonaler Antikörper

Katalog-Nr.:CL488-20253



Allgemeine Informationen

Katalog-Nr.: CL488-20253	GenBank-Zugangsnummer: NM_000876	Reinigungsmethode: Antigen-Affinitätsreinigung
Größe: 100ul , Konzentration: 1000 µg/ml von3482	GeneID (NCBI): 3482	Anregungs-/Emissionsmaxima-Wellenlängen: 493 nm / 522 nm
Nanodrop;	Vollständiger Name: insulin-like growth factor 2 receptor	
Wirt: Kaninchen	Berechnete Masse: 274 kDa	
Isotyp: IgG	Beobachtete Masse: 300 kDa	

Anwendungen

Geprüfte Anwendungen:
FC (Intra)

Getestete Reaktivität:
Human

Hintergrundinformationen

IGF2R, also named as MPRI, CI Man-6-P receptor, CI-MPR, M6PR, IGF-II receptor, M6P/IGF2R, MPR 300 and CD222, belongs to the MRL1/IGF2R family. IGF2R transports of phosphorylated lysosomal enzymes from the Golgi complex and the cell surface to lysosomes. IGF2R is a lysosomal enzymes bearing phosphomannosyl residues bind specifically to mannose-6-phosphate receptors in the Golgi apparatus and the resulting receptor-ligand complex is transported to an acidic prelysosomal compartment where the low pH mediates the dissociation of the complex. This receptor also binds IGF2. IGF2R acts as a positive regulator of T-cell coactivation, by binding DPP4. The antibody is specific to IGF2R.

Lagerung

Lagerungsbedingungen:
Bei -20°C lagern. Vor Licht schützen. Nach dem Versand ein Jahr stabil.

Lagerungspuffer:
BS mit 50% Glycerin, 0,05% Proclin300, 0,5% BSA, pH 7,3.

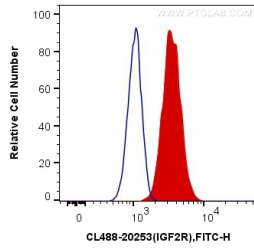
Aliquotieren ist nicht notwendig bei -20°C Lagerung

***** 20ul-Größen enthalten 0.1% BSA**

For technical support and original validation data for this product please contact:
T: 1 (888) 4PTGLAB (1-888-478-4522) (toll free in USA), or 1(312) 455-8498 (outside USA)
E: proteintech@ptglab.com
W: ptglab.com

This product is exclusively available under Proteintech Group brand and is not available to purchase from any other manufacturer.

Ausgewählte Validierungsdaten



1X10⁶ HepG2 cells were intracellularly stained with 0.4 ug CoraLite® Plus 488 Anti-Human IGF2R-Specific (CL488-20253) (red), or 0.4 ug Control Antibody. Cells were fixed with 4% PFA and permeabilized with Flow Cytometry Perm Buffer (PF00011-C).