

Nur für Forschungszwecke

# EPCAM Polyklonaler Antikörper

Katalog-Nr.:CL488-21050

Vorgestelltes Produkt



## Allgemeine Informationen

|   |  |  |
|---|--|--|
| <b>Katalog-Nr.:</b><br>CL488-21050                                      | <b>GenBank-Zugangsnummer:</b><br>BC014785                  | <b>Reinigungsmethode:</b><br>Antigen-Affinitätsreinigung           |
| <b>Größe:</b><br>100ul , Konzentration: 1000 µg/ml von4072<br>Nanodrop; | <b>GeneID (NCBI):</b><br>epithelial cell adhesion molecule | <b>Anregungs-/Emissionsmaxima-Wellenlängen:</b><br>493 nm / 522 nm |
| <b>Wirt:</b><br>Kaninchen   | <b>Berechnete Masse:</b><br>314 aa, 35 kDa                 |  |
| <b>Isotyp:</b><br>IgG   | <b>Beobachtete Masse:</b><br>35-40 kDa                     |  |
| <b>Immunogen Katalognummer:</b><br>AG15393                              |  |  |

## Anwendungen

**Geprüfte Anwendungen:**  
FC  
**Getestete Reaktivität:**  
Human, Maus

## Hintergrundinformationen

Epithelial cell adhesion molecule (EpCAM, CD326) is a type I transmembrane glycoprotein that functions as a homophilic, epithelial-specific intercellular cell-adhesion molecule. In addition to cell adhesion, EpCAM is also involved in cellular signaling, cell migration, proliferation, and differentiation. EpCAM is highly expressed on most carcinomas and therefore of potential use as a diagnostic and prognostic marker for a variety of carcinomas, and has become a therapeutic target. EpCAM may occur in distinct forms due to glycosylation. (PMID: 20837599; 19249674; 21576002; 22647938; 12691820)

## Lagerung

**Lagerungsbedingungen:**  
Bei -20°C lagern. Vor Licht schützen. Nach dem Versand ein Jahr stabil.  
**Lagerungspuffer:**  
BS mit 50% Glycerin, 0,05% Proclin300, 0,5% BSA, pH 7,3.  
**Aliquotieren ist nicht notwendig bei -20°C Lagerung**

**\*\*\* 20ul-Größen enthalten 0.1% BSA**

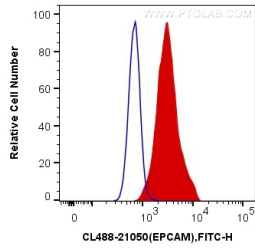
For technical support and original validation data for this product please contact:

T: 1 (888) 4PTGLAB (1-888-478-4522) (toll free in USA), or 1(312) 455-8498 (outside USA)

E: [proteintech@ptglab.com](mailto:proteintech@ptglab.com)  
W: [ptglab.com](http://ptglab.com)

**This product is exclusively available under Proteintech Group brand and is not available to purchase from any other manufacturer.**

## Ausgewählte Validierungsdaten



1X10<sup>6</sup> MCF-7 cells were surface stained with 0.4 ug CoraLite® Plus 488 Anti-Human EPCAM (CL488-21050) (red), or 0.4 ug Control Antibody. Cells were not fixed.