

Nur für Forschungszwecke

ATOH1 Polyklonaler Antikörper

Katalog-Nr.:CL488-21215



Allgemeine Informationen

Katalog-Nr.: CL488-21215	GenBank-Zugangsnummer: BC069594	Reinigungsmethode: Antigen-Affinitätsreinigung
Größe: 100ul , Konzentration: 1000 µg/ml von474 Nanodrop;	GeneID (NCBI): atonal homolog 1 (Drosophila)	Anregungs-/Emissionsmaxima-Wellenlängen: 493 nm / 522 nm
Wirt: Kaninchen	Vollständiger Name: atonal homolog 1 (Drosophila)	
Isotyp: IgG	Berechnete Masse: 354 aa, 38 kDa	
Immunogen Katalognummer: AG15615	Beobachtete Masse: 38-40 kDa	

Anwendungen

Geprüfte Anwendungen:
FC (Intra)

Getestete Reaktivität:
Human, Maus, Ratte

Hintergrundinformationen

ATOH1, also named as Protein atonal homolog 1 or BHLHA14, is a 364 amino acid protein, which contains 1 bHLH (basic helix-loop-helix) domain. ATOH1, as a transcriptional regulator in the nucleus activates E box-dependent transcription in collaboration with TCF3/E47, but the activity is completely antagonized by the negative regulator of neurogenesis HES1. ATOH1 plays a role in the differentiation of subsets of neural cells by activating E box-dependent transcription.

Lagerung

Lagerungsbedingungen:
Bei -20°C lagern. Vor Licht schützen.

Lagerungspuffer:
BS mit 50% Glycerin, 0,05% Proclin300, 0,5% BSA, pH 7,3.

Aliquotieren ist nicht notwendig bei -20°C Lagerung

*** 20ul-Größen enthalten 0.1% BSA

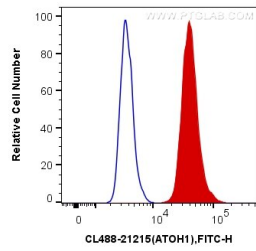
For technical support and original validation data for this product please contact:

T: 1 (888) 4PTGLAB (1-888-478-4522) (toll free
in USA), or 1(312) 455-8498 (outside USA)

E: proteintech@ptglab.com
W: ptglab.com

This product is exclusively available under Proteintech Group brand and is not available to purchase from any other manufacturer.

Ausgewählte Validierungsdaten



1X10⁶ HepG2 cells were intracellularly stained with 0.4 ug CoraLite® Plus 488 Anti-Human ATOH1 (CL488-21215) (red), or 0.4 ug Control Antibody. Cells were fixed and permeabilized with Transcription Factor Staining Buffer Kit (PF00011).