

Nur für Forschungszwecke

# pan-keratin Polyklonaler Antikörper

Katalog-Nr.:CL488-26411



## Allgemeine Informationen

<b>Katalog-Nr.:</b> CL488-26411	<b>GenBank-Zugangsnummer:</b> BC024292	<b>Reinigungsmethode:</b> Antigen-Affinitätsreinigung
<b>Größe:</b> 100ul , Konzentration: 1000 µg/ml von3852	<b>GeneID (NCBI):</b> keratin 5	<b>Empfohlene Verdünnungen:</b> IF 1:50-1:500
<b>Nanodrop;</b>	<b>Vollständiger Name:</b> keratin 5	<b>Anregungs-/Emissionsmaxima-Wellenlängen:</b> 493 nm / 522 nm
<b>Wirt:</b> Kaninchen	<b>Berechnete Masse:</b> 590 aa, 62 kDa	
<b>Isotyp:</b> IgG		
<b>Immunogen Katalognummer:</b> AG24184		

## Anwendungen

<b>Geprüfte Anwendungen:</b> FC (Intra), IF	<b>Positivkontrollen:</b> IF : HeLa-Zellen, humanes Kolonkarzinomgewebe, humanes Lungenkarzinomgewebe
<b>Getestete Reaktivität:</b> Human	

## Hintergrundinformationen

Keratins are a large family of proteins that form the intermediate filament cytoskeleton of epithelial cells, which are classified into two major sequence types. Type I keratins are a group of acidic intermediate filament proteins, including K9-K23, and the hair keratins Ha1-Ha8. Type II keratins are the basic or neutral counterparts to the acidic type I keratins, including K1-K8, and the hair keratins, Hb1-Hb6. Keratin isoforms demonstrate tissue- and differentiation-specific profiles that make them useful as research biomarkers. Research studies have shown that mutations in keratin genes are associated with skin disorders, liver and pancreatic diseases, and inflammatory intestinal diseases. This antibody is a pan-keratin antibody.

## Lagerung

**Lagerungsbedingungen:**  
Bei -20°C lagern. Vor Licht schützen. Nach dem Versand ein Jahr stabil.  
**Lagerungspuffer:**  
BS mit 50% Glycerin, 0,05% Proclin300, 0,5% BSA, pH 7,3.  
Aliquotieren ist nicht notwendig bei -20°C Lagerung

\*\*\* 20ul-Größen enthalten 0.1% BSA

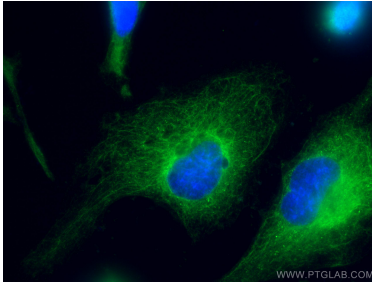
For technical support and original validation data for this product please contact:

T: 1 (888) 4PTGLAB (1-888-478-4522) (toll free in USA), or 1(312) 455-8498 (outside USA)

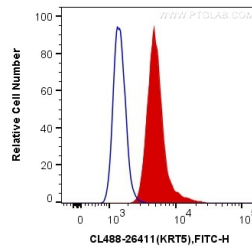
E: proteintech@ptglab.com  
W: ptglab.com

This product is exclusively available under Proteintech Group brand and is not available to purchase from any other manufacturer.

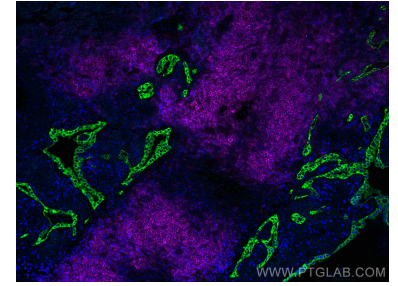
## Ausgewählte Validierungsdaten



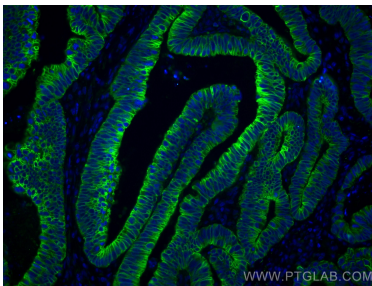
Immunofluorescent analysis of (4% PFA) fixed HeLa cells using CoraLite® Plus 488 pan-keratin antibody (CL488-26411) at dilution of 1:100.



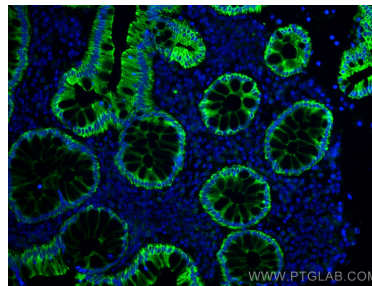
1X10<sup>6</sup> A431 cells were intracellularly stained with 0.2 ug CoraLite® Plus 488 Anti-Human pan-keratin (CL488-26411) (red), or 0.2 ug Control Antibody. Cells were fixed with 4% PFA and permeabilized with Flow Cytometry Perm Buffer (PF00011-C).



Immunofluorescent analysis of (4% PFA) fixed human lung cancer tissue using CoraLite® Plus 488 pan-keratin antibody (CL488-26411) at dilution of 1:200, CoraLite® Plus 647 CD20 antibody (CL647-60271, Clone: 4A7G3, Magenta).



Immunofluorescent analysis of (4% PFA) fixed human colon cancer tissue using CoraLite® Plus 488 pan-keratin antibody (CL488-26411) at dilution of 1:100.



Immunofluorescent analysis of (4% PFA) fixed human colon cancer tissue using CoraLite® Plus 488 pan-keratin antibody (CL488-26411) at dilution of 1:100.