

Nur für Forschungszwecke

GAPDH Monoklonaler Antikörper

Katalog-Nr.: CL488-60004

6 Publikationen



Allgemeine Informationen

Katalog-Nr.: CL488-60004	GenBank-Zugangsnummer: BC004109	Reinigungsmethode: Protein-A-Reinigung
Größe: 100ul, Konzentration: 1000 µg/ml von 2597 Nanodrop;	GeneID (NCBI): 2597	CloneNo.: 1E6D9
Wirt: Maus	Vollständiger Name: glyceraldehyde-3-phosphate dehydrogenase	Empfohlene Verdünnungen: WB 1:2000-1:16000
Isotyp: IgG2b	Berechnete Masse: 36 kDa	Anregungs-/Emissionsmaxima- Wellenlängen: 493 nm / 522 nm
Immunogen Katalognummer: AG0766	Beobachtete Masse: 36 kDa	

Anwendungen

Geprüfte Anwendungen: FC (Intra), WB	Positivkontrollen: WB: A549-Zellen, HEK-293-Zellen, HeLa-Zellen, Jurkat-Zellen
In Publikationen genannte Anwendungen: WB	
Getestete Reaktivität: Hefe, Human, Maus, Pflanze, Ratte, Zebrafisch	
Zitierte Arten: Human, Maus, Ratte	

Hintergrundinformationen

Glyceraldehyde-3-phosphate dehydrogenase (GAPDH) catalyzes the phosphorylation of glyceraldehyde-3-phosphate during glycolysis. GAPDH participates in nuclear events including transcription, binding RNA, RNA transportation, DNA replication, DNA repair and apoptosis. Being stably and constitutively expressed at high levels in most tissues and cells, GAPDH is considered a housekeeping protein. It is widely used as a control for RT-PCR and also loading control in electrophoresis and Western blotting. GAPDH is normally expressed in cellular cytoplasm or membrane, but can occasionally translocate to the nucleus after the addition of post-translational modifications such as S-nitrosylation. This antibody is raised against full length GAPDH of human origin. It can recognize the 36 kDa GAPDH protein in most cells/tissues. In addition, a band below 36 kDa can always be detected as the isoform or spliced product of GAPDH (PMID: 23885286, 23877755, 19368702). Please note that some physiological factors, such as hypoxia and diabetes, increase GAPDH expression in certain cell types.

Bemerkenswerte Veröffentlichungen

Verfasser	Pubmed ID	Journal	Anwendung
Dcai Chi	34780782	Exp Cell Res	WB
Julie A Hicks	29577951	Virus Res	WB
Guojun Gao	32507767	Aging (Albany NY)	WB

Lagerung

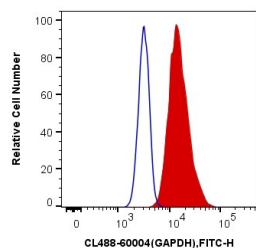
Lagerungsbedingungen:
Bei -20°C lagern. Vor Licht schützen. Nach dem Versand ein Jahr stabil.
Lagerungspuffer:
BS mit 50% Glycerin, 0,05% Proclin300, 0,5% BSA, pH 7,3.
Aliquotieren ist nicht notwendig bei -20°C Lagerung

*** 20ul-Größen enthalten 0.1% BSA

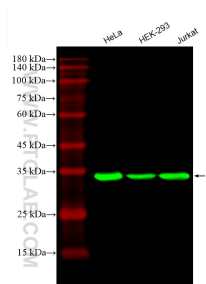
For technical support and original validation data for this product please contact:
T: 1 (888) 4PTGLAB (1-888-478-4522) (toll free in USA), or 1(312) 455-8498 (outside USA)
E: proteintech@ptglab.com
W: ptglab.com

This product is exclusively available under Proteintech Group brand and is not available to purchase from any other manufacturer.

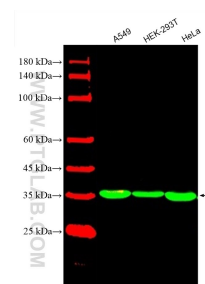
Ausgewählte Validierungsdaten



1X10⁶ HeLa cells were intracellularly stained with 0.4 ug CoraLite® Plus 488 Anti-Human GAPDH (CL488-60004, Clone:1E6D9) (red), or 0.4 ug Mouse IgG2b Isotype Control (CL488-66360-3, Clone: K11B8C4B5) (blue). Cells were fixed with 4% PFA and permeabilized with Flow Cytometry Perm Buffer (PF00011-C).



Various lysates were subjected to SDS PAGE followed by western blot with CL488-60004 (GAPDH antibody) at dilution of 1:10000 incubated at room temperature for 1.5 hours.



Various lysates were subjected to SDS PAGE followed by western blot with CL488-60004 (GAPDH antibody) at dilution of 1:8000 incubated at room temperature for 1.5 hours.