

Nur für Forschungszwecke

# EMILIN1 Monoklonaler Antikörper

Katalog-Nr.:CL488-60047



## Allgemeine Informationen

<b>Katalog-Nr.:</b> CL488-60047	<b>GenBank-Zugangsnummer:</b> BC007530	<b>Reinigungsmethode:</b> Protein-G-Reinigung
<b>Größe:</b> 100ul , Konzentration: 1000 µg/ml von11117 Nanodrop;	<b>GeneID (NCBI):</b> von11117	<b>CloneNo.:</b> 2A5C8
<b>Wirt:</b> Maus	<b>Vollständiger Name:</b> elastin microfibril interfacer 1	<b>Empfohlene Verdünnungen:</b> IF 1:50-1:500
<b>Isotyp:</b> IgG1	<b>Berechnete Masse:</b> 107 kDa	<b>Anregungs-/Emissionsmaxima- Wellenlängen:</b> 493 nm / 522 nm
<b>Immunogen Katalognummer:</b> AG1016	<b>Beobachtete Masse:</b> 120-130 kDa	

## Anwendungen

<b>Geprüfte Anwendungen:</b> IF	<b>Positivkontrollen:</b> IF : humanes Ovarialkarzinomgewebe,
<b>Getestete Reaktivität:</b> Human	

## Hintergrundinformationen

EMILIN1, also named as EMILIN, EMILIN-1, gp115 and EMI, may be responsible for anchoring smooth muscle cells to elastic fibers, and may be involved not only in the formation of the elastic fiber, but also in the processes that regulate vessel assembly. It has cell adhesive capacity. EMILIN1 is a negative regulator of the transforming growth factor-beta (TGF-beta) signaling, which is involved in blood pressure (BP) homeostasis (PMID:20186130). EMILIN1 may play a key role in hypertensive vascular remodeling. TGFβ proteins are the main regulators of blood vessel development and maintenance, and EMILIN1 inhibits TGFβ signaling by binding specifically to the proTGFβ precursor and preventing its maturation by furin convertases in the extracellular space (PMID:19922630).

## Lagerung

**Lagerungsbedingungen:**  
Bei -20°C lagern. Vor Licht schützen.  
**Lagerungspuffer:**  
BS mit 50% Glycerin, 0,05% Proclin300, 0,5% BSA, pH 7,3.  
Aliquotieren ist nicht notwendig bei -20°C Lagerung

\*\*\* 20ul-Größen enthalten 0.1% BSA

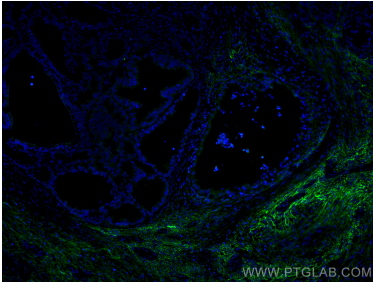
For technical support and original validation data for this product please contact:

T: 1 (888) 4PTGLAB (1-888-478-4522) (toll free  
in USA), or 1(312) 455-8498 (outside USA)

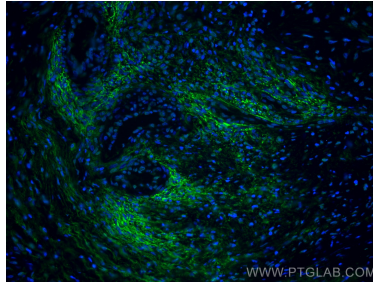
E: proteintech@ptglab.com  
W: ptglab.com

This product is exclusively available under Proteintech Group brand and is not available to purchase from any other manufacturer.

## Ausgewählte Validierungsdaten



Immunofluorescent analysis of (4% PFA) fixed human ovary tumor tissue using CoraLite® Plus 488 EMILIN1 antibody (CL488-60047, Clone: 2A5C8 ) at dilution of 1:200.



Immunofluorescent analysis of (4% PFA) fixed human ovary tumor tissue using CoraLite® Plus 488 EMILIN1 antibody (CL488-60047, Clone: 2A5C8 ) at dilution of 1:200.