

Nur für Forschungszwecke

CD206 Monoklonaler Antikörper

Katalog-Nr.:CL488-60143 **2 Publikationen**



Allgemeine Informationen

Katalog-Nr.: CL488-60143	GenBank-Zugangsnummer: NM_002438	Reinigungsmethode: Protein-A-Reinigung
Größe: 100ul , Konzentration: 1000 µg/ml von4360 Nanodrop;	GeneID (NCBI): mannose receptor, C type 1	CloneNo.: 2A6A10
Wirt: Maus	Vollständiger Name: mannose receptor, C type 1	Empfohlene Verdünnungen: IF 1:50-1:500
Isotyp: IgG2a	Berechnete Masse: 166 kDa	Anregungs-/Emissionsmaxima- Wellenlängen: 493 nm / 522 nm

Anwendungen

Geprüfte Anwendungen: IF	Positivkontrollen: IF : humanes Lungenkarzinomgewebe,
In Publikationen genannte Anwendungen: IF	
Getestete Reaktivität: Human	
Zitierte Arten: Human	

Hintergrundinformationen

CD206, also named as MMR, CLEC13D and MRC1, is a type I membrane receptor that mediates the endocytosis of glycoproteins by macrophages. CD206 has been shown to bind high-mannose structures on the surface of potentially pathogenic viruses, bacteria, and fungi so that they can be neutralized by phagocytic engulfment. CD206 is a 170 kDa transmembrane protein which contains 5 domains: an amino-terminal cysteine-rich region, a fibronectin type II repeat, a series of eight tandem lectin-like carbohydrate recognition domains (responsible for the recognition of mannose and fucose), a transmembrane domain, and an intracellular carboxy-terminal tail. It is expressed on most tissue macrophages, in vitro derived dendritic cells, lymphatic and sinusoidal endothelia. This antibody is conjugated with CL488, Ex/Em 488 nm/515 nm.

Bemerkenswerte Veröffentlichungen

Verfasser	Pubmed ID	Journal	Anwendung
Jia-Bin Wang	35999359	Cancer Gene Ther	IF
Xiaoqian Jiang	36764561	J Ethnopharmacol	IF

Lagerung

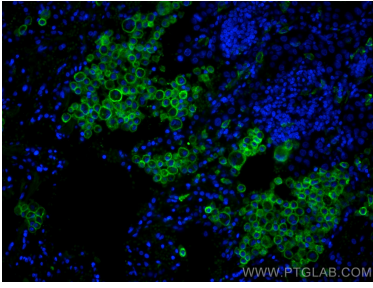
Lagerungsbedingungen:
Bei -20°C lagern. Vor Licht schützen. Nach dem Versand ein Jahr stabil.
Lagerungspuffer:
BS mit 50% Glycerin, 0,05% Proclin300, 0,5% BSA, pH 7,3.
Aliquotieren ist nicht notwendig bei -20°C Lagerung

*** 20ul-Größen enthalten 0.1% BSA

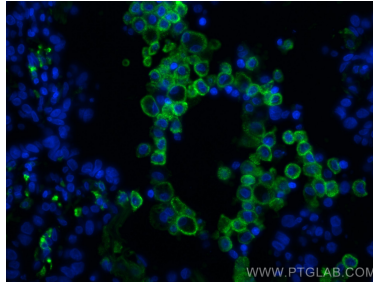
For technical support and original validation data for this product please contact:
T: 1 (888) 4PTGLAB (1-888-478-4522) (toll free in USA), or 1(312) 455-8498 (outside USA)
E: proteintech@ptglab.com
W: ptglab.com

This product is exclusively available under Proteintech Group brand and is not available to purchase from any other manufacturer.

Ausgewählte Validierungsdaten



Immunofluorescent analysis of (4% PFA) fixed human lung cancer tissue using CoraLite® Plus 488 CD206 antibody (CL488-60143, Clone: 2A6A10) at dilution of 1:200.



Immunofluorescent analysis of (4% PFA) fixed human lung cancer tissue using CoraLite® Plus 488 CD206 antibody (CL488-60143, Clone: 2A6A10) at dilution of 1:200.