

Allgemeine Informationen

Katalog-Nr.: CL488-60145	GenBank-Zugangsnummer: BC001060	Reinigungsmethode: Protein-A-Reinigung
Größe: 100ul , Konzentration: 1000 µg/ml von7849 Nanodrop;	GeneID (NCBI): paired box 8	CloneNo.: 4H7B3
Wirt: Maus	Vollständiger Name: paired box 8	Empfohlene Verdünnungen: IF 1:50-1:500
Isotyp: IgG2b	Berechnete Masse: 48 kDa	Anregungs-/Emissionsmaxima-Wellenlängen: 493 nm / 522 nm
Immunogen Katalognummer: AG0306		

Anwendungen

Geprüfte Anwendungen: IF	Positivkontrollen: IF : SKOV-3-Zellen, humanes Ovarialkarzinomgewebe, Mausnierengewebe
Getestete Reaktivität: Human, Maus	

Hintergrundinformationen

PAX8 is a member of the paired box (PAX) family of transcription factors, typically containing a paired box domain and a paired-type homeodomain. It is expressed during organogenesis of the thyroid gland, kidney and Mullerian system. It is thought to regulate the expression of Wilms tumor suppressor (WT1) gene and mutations in PAX8 have been associated with Wilms tumor cells, thyroid and ovarian carcinomas. PAX8 is a useful marker in distinguishing ovarian carcinomas from mammary carcinomas (PMID: 18724243). PAX8 is expressed in a high percentage of ovarian serous, endometrioid, and clear cell carcinomas, but only rarely in primary ovarian mucinous adenocarcinomas.

PAX8 has 5 isoforms with calculated MW 31kd, 34kd, 41kd, 43kd and 48kd. And there is a 60kd band corresponding to the electrophoretic mobility of PAX8 (PMID:15650356).

Lagerung

Lagerungsbedingungen:
Bei -20°C lagern. Vor Licht schützen. Nach dem Versand ein Jahr stabil.
Lagerungspuffer:
BS mit 50% Glycerin, 0,05% Proclin300, 0,5% BSA, pH 7,3.
Aliquotieren ist nicht notwendig bei -20°C Lagerung

***** 20ul-Größen enthalten 0.1% BSA**

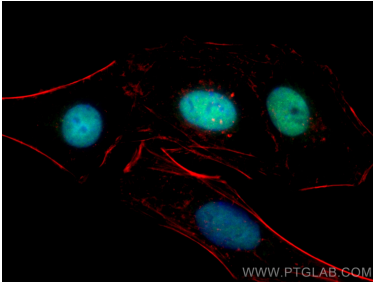
For technical support and original validation data for this product please contact:

T: 1 (888) 4PTGLAB (1-888-478-4522) (toll free in USA), or 1(312) 455-8498 (outside USA)

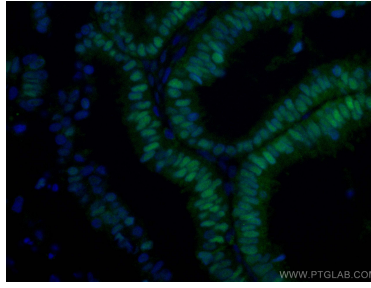
E: proteintech@ptglab.com
W: ptglab.com

This product is exclusively available under Proteintech Group brand and is not available to purchase from any other manufacturer.

Ausgewählte Validierungsdaten



Immunofluorescent analysis of (4% PFA) fixed SKOV-3 cells using CoraLite® Plus 488 PAX8 antibody (CL488-60145, Clone: 4H7B3) at dilution of 1:800, CL594-Phalloidin (red).



Immunofluorescent analysis of (4% PFA) fixed human ovary tumor tissue using CoraLite® Plus 488 PAX8 antibody (CL488-60145, Clone: 4H7B3) at dilution of 1:100.