

Nur für Forschungszwecke

CKM-Specific Monoklonaler Antikörper

Katalog-Nr.:CL488-60177



Allgemeine Informationen

Katalog-Nr.: CL488-60177	GenBank-Zugangsnummer: BC007462	Reinigungsmethode: Protein-A-Reinigung
Größe: 100ul , Konzentration: 1000 µg/ml von1158 Nanodrop;	GeneID (NCBI): von1158	CloneNo.: 2G3F6
Wirt: Maus	Vollständiger Name: creatine kinase, muscle	Empfohlene Verdünnungen: IF 1:50-1:500
Isotyp: IgG2a	Berechnete Masse: 43 kDa	Anregungs-/Emissionsmaxima-Wellenlängen: 493 nm / 522 nm
	Beobachtete Masse: 43 kDa	

Anwendungen

Geprüfte Anwendungen: IF	Positivkontrollen: IF : C2C12-Zellen,
Getestete Reaktivität: Human, Maus, Ratte	

Hintergrundinformationen

CKM, also named as CKMM and M-CK, is a member of the ATP:guanido phosphotransferase protein family. It is a cytoplasmic enzyme involved in energy homeostasis and is an important serum marker for myocardial infarction. CKM reversibly catalyzes the transfer of phosphate between ATP and various phosphogens such as creatine phosphate. It acts as a homodimer in striated muscle as well as in other tissues, and as a heterodimer with a similar brain isozyme in heart. CK isoenzymes play a central role in energy transduction in tissues with large, fluctuating energy demands, such as skeletal muscle, heart, brain and spermatozoa. CK MB consists of a dimer of nonidentical chains. With MM being the major form in skeletal muscle and myocardium, MB existing in myocardium, and BB existing in many tissues, especially brain.

Lagerung

Lagerungsbedingungen:
Bei -20°C lagern. Vor Licht schützen. Nach dem Versand ein Jahr stabil.
Lagerungspuffer:
BS mit 50% Glycerin, 0,05% Proclin300, 0,5% BSA, pH 7,3.
Aliquotieren ist nicht notwendig bei -20°C Lagerung

***** 20ul-Größen enthalten 0.1% BSA**

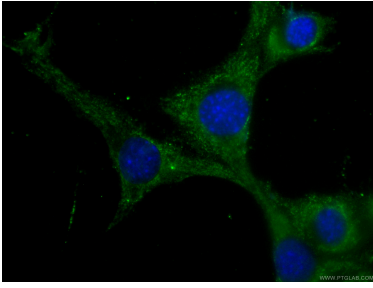
For technical support and original validation data for this product please contact:

T: 1 (888) 4PTGLAB (1-888-478-4522) (toll free in USA), or 1(312) 455-8498 (outside USA)

E: proteintech@ptglab.com
W: ptglab.com

This product is exclusively available under Proteintech Group brand and is not available to purchase from any other manufacturer.

Ausgewählte Validierungsdaten



Immunofluorescent analysis of (-20°C Ethanol) fixed C2C12 cells using CL488-60177 (CKM-Specific antibody) at dilution of 1:100.