

Nur für Forschungszwecke

BCL2 Monoklonaler Antikörper

Katalog-Nr.:CL488-60178

Vorgestelltes Produkt



Allgemeine Informationen

Katalog-Nr.: CL488-60178	GenBank-Zugangsnummer: BC027258	Reinigungsmethode: Protein-A-Reinigung
Größe: 100ul , Konzentration: 1000 µg/ml von596 Nanodrop;	GeneID (NCBI): Vollständiger Name: B-cell CLL/lymphoma 2	CloneNo.: 4H8C6
Wirt: Maus	Berechnete Masse: 26 kDa	Empfohlene Verdünnungen: IF 1:50-1:500
Isotyp: IgG2b	Beobachtete Masse: 26 kDa	Anregungs-/Emissionsmaxima- Wellenlängen: 493 nm / 522 nm
Immunogen Katalognummer: AG3508		

Anwendungen

Geprüfte Anwendungen: FC (Intra), IF	Positivkontrollen: IF : humanes Tonsillitisgewebe, humanes Appendizitis-Gewebe, MCF-7-Zellen
Getestete Reaktivität: Hausschwein, Human	

Hintergrundinformationen

BCL2 belongs to the Bcl-2 family. It suppresses apoptosis in a variety of cell systems including factor-dependent lymphohematopoietic and neural cells. BCL2 regulates cell death by controlling the mitochondrial membrane permeability. It appears to function in a feedback loop system with caspases. BCL2 inhibits caspase activity either by preventing the release of cytochrome c from the mitochondria and/or by binding to the apoptosis-activating factor (APAF-1).

Lagerung

Lagerungsbedingungen:
Bei -20°C lagern. Vor Licht schützen. Nach dem Versand ein Jahr stabil.
Lagerungspuffer:
BS mit 50% Glycerin, 0,05% Proclin300, 0,5% BSA, pH 7,3.
Aliquotieren ist nicht notwendig bei -20°C Lagerung

*** 20ul-Größen enthalten 0.1% BSA

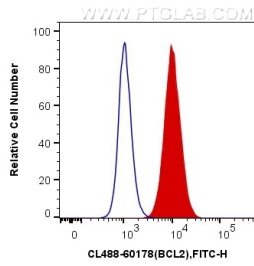
For technical support and original validation data for this product please contact:

T: 1 (888) 4PTGLAB (1-888-478-4522) (toll free
in USA), or 1(312) 455-8498 (outside USA)

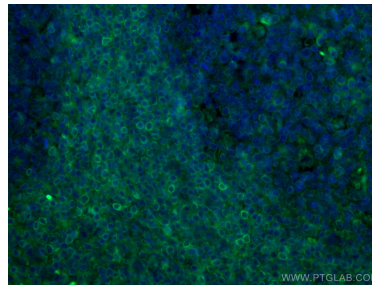
E: proteintech@ptglab.com
W: ptglab.com

This product is exclusively available under Proteintech Group brand and is not available to purchase from any other manufacturer.

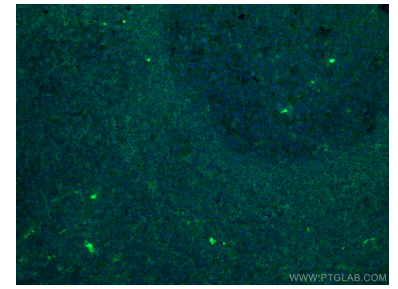
Ausgewählte Validierungsdaten



1×10^6 Jurkat cells were intracellularly stained with 0.4 μ g CoraLite® Plus 488 Anti-Human BCL2 (CL488-60178, Clone:4H8C6) (red), or 0.4 μ g Mouse IgG2b Isotype Control (CL488-66360-3, Clone: K11B8C4B5) (blue). Cells were fixed with 4% PFA and permeabilized with Flow Cytometry Perm Buffer (PF00011-C).



Immunofluorescent analysis of (4% PFA) fixed human tonsillitis tissue using CoraLite® Plus 488-conjugated BCL2 antibody (CL488-60178, Clone: 4H8C6) at dilution of 1:100.



Immunofluorescent analysis of (4% PFA) fixed human tonsillitis tissue using CoraLite® Plus 488-conjugated BCL2 antibody (CL488-60178, Clone: 4H8C6) at dilution of 1:100.