

Nur für Forschungszwecke

CD3 Monoklonaler Antikörper

Katalog-Nr.:CL488-60181



Allgemeine Informationen

Katalog-Nr.: CL488-60181	GenBank-Zugangsnummer: BC049847	Reinigungsmethode: Protein-A-Reinigung
Größe: 100ul , Konzentration: 2000 µg/ml von916 Nanodrop;	GeneID (NCBI): 916	CloneNo.: 3F3A1
Wirt: Maus	Vollständiger Name: CD3e molecule, epsilon (CD3-TCR complex)	Empfohlene Verdünnungen: IF 1:50-1:500
Isotyp: IgG2b	Berechnete Masse: 207 aa, 23 kDa	Anregungs-/Emissionsmaxima-Wellenlängen: 493 nm / 522 nm
Immunogen Katalognummer: AG11797		

Anwendungen

Geprüfte Anwendungen: IF	Positivkontrollen: IF : humanes Lungenkarzinomgewebe, humanes Tonsillitisgewebe
Getestete Reaktivität: Human	

Hintergrundinformationen

CD3 is a complex of proteins that directly associates with the T cell receptor (TCR). The TCR/CD3 complex of T-lymphocytes consists of either a TCR alpha/beta or TCR gamma/delta heterodimer coexpressed at the cell surface with the invariant subunits of CD3 labeled gamma, delta, epsilon, zeta, and eta. The TCR recognizes antigens bound to major histocompatibility complex (MHC) molecules. TCR-mediated peptide-MHC recognition is transmitted to the CD3 complex, leading to the intracellular signal transduction. CD3 is considered to be a pan-T cell marker for detection of normal and neoplastic T cells. This anti-CD3 is a monoclonal antibody directed against the epsilon chain of human CD3 molecule. And the antibody is conjugated with CL488, Ex/Em 488 nm/515 nm.

Lagerung

Lagerungsbedingungen:
Bei -20°C lagern. Vor Licht schützen. Nach dem Versand ein Jahr stabil.
Lagerungspuffer:
BS mit 50% Glycerin, 0,05% Proclin300, 0,5% BSA, pH 7,3.
Aliquotieren ist nicht notwendig bei -20°C Lagerung

*** 20ul-Größen enthalten 0.1% BSA

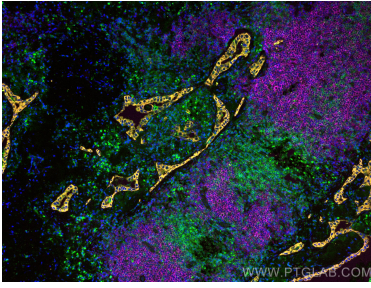
For technical support and original validation data for this product please contact:

T: 1 (888) 4PTGLAB (1-888-478-4522) (toll free in USA), or 1(312) 455-8498 (outside USA)

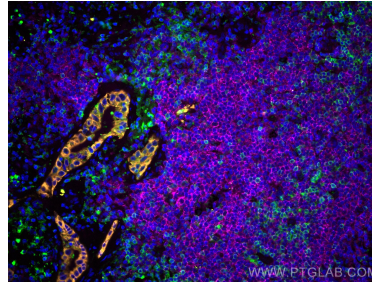
E: proteintech@ptglab.com
W: ptglab.com

This product is exclusively available under Proteintech Group brand and is not available to purchase from any other manufacturer.

Ausgewählte Validierungsdaten



Immunofluorescent analysis of (4% PFA) fixed human lung cancer tissue using CoraLite® Plus 488 CD3 antibody (CL488-60181, Clone: 3F3A1) at dilution of 1:100, CoraLite®555 pan-keratin antibody (CL555-26411, orange), CoraLite® Plus 647 CD20 antibody (CL647-60271, Clone: 4A7G3, Magenta).



Immunofluorescent analysis of (4% PFA) fixed human lung cancer tissue using CoraLite® Plus 488 CD3 antibody (CL488-60181, Clone: 3F3A1) at dilution of 1:100, CoraLite®555 pan-keratin antibody (CL555-26411, orange), CoraLite® Plus 647 CD20 antibody (CL647-60271, Clone: 4A7G3, Magenta).