

Nur für Forschungszwecke

Cytokeratin 20 Monoklonaler Antikörper

Katalog-Nr.:CL488-60183



Allgemeine Informationen

Katalog-Nr.: CL488-60183	GenBank-Zugangsnummer: BC031559	Reinigungsmethode: Protein-A-Reinigung
Größe: 100ul , Konzentration: 1000 µg/ml von54474	GeneID (NCBI): 54474	CloneNo.: 4D10A4
Nanodrop;	Vollständiger Name: keratin 20	Empfohlene Verdünnungen: IF 1:50-1:500
Wirt: Maus	Berechnete Masse: 424 aa, 48 kDa	Anregungs-/Emissionsmaxima-Wellenlängen: 493 nm / 522 nm
Isotyp: IgG2b		
Immunogen Katalognummer: AG11336		

Anwendungen

Geprüfte Anwendungen: IF	Positivkontrollen: IF : HT-29-Zellen, humanes Kolongewebe
Getestete Reaktivität: Human	

Hintergrundinformationen

Keratins are a large family of proteins that form the intermediate filament cytoskeleton of epithelial cells. Keratin expression is highly regulated, tissue specific, and varies according to cell-state. Type I keratins consist of acidic, low molecular weight proteins with MW ranging from 40 kDa (KRT19) to 64 kDa (KRT9). Type 2 keratins consist of basic or neutral, high molecular weight proteins with MW from 52 kDa (KRT8) to 67 kDa (KRT18).Keratin 20 is a type I cytokeratin. It is a major cellular protein of mature enterocytes and goblet cells and is specifically found in the gastric and intestinal mucosa.

Lagerung

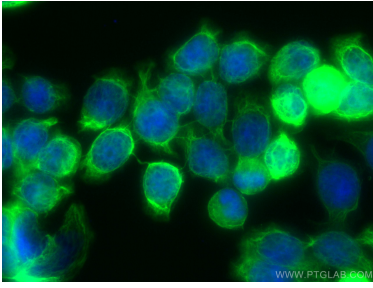
Lagerungsbedingungen:
Bei -20°C lagern. Vor Licht schützen. Nach dem Versand ein Jahr stabil.
Lagerungspuffer:
BS mit 50% Glycerin, 0,05% Proclin300, 0,5% BSA, pH 7,3.
Aliquotieren ist nicht notwendig bei -20°C Lagerung

***** 20ul-Größen enthalten 0.1% BSA**

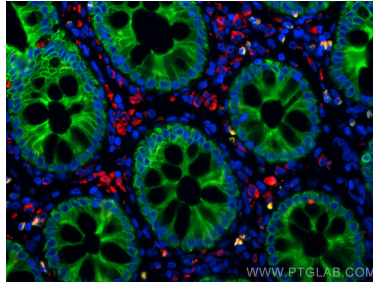
For technical support and original validation data for this product please contact:
T: 1 (888) 4PTGLAB (1-888-478-4522) (toll free in USA), or 1(312) 455-8498 (outside USA)
E: proteintech@ptglab.com
W: ptglab.com

This product is exclusively available under Proteintech Group brand and is not available to purchase from any other manufacturer.

Ausgewählte Validierungsdaten



Immunofluorescent analysis of (-20°C Ethanol) fixed HT-29 cells using CoraLite® Plus 488 Cytokeratin 20 antibody (CL488-60183, Clone: 4D10A4) at dilution of 1:200.



Immunofluorescent analysis of (4% PFA) fixed human colon tissue using CoraLite® Plus 488 Cytokeratin 20 antibody (CL488-60183, Clone: 4D10A4) at dilution of 1:200, CoraLite® 594 CD68 antibody (CL594-25747, red).