

Nur für Forschungszwecke

# ESR2 Monoklonaler Antikörper

Katalog-Nr.:CL488-60197

Vorgestelltes Produkt



## Allgemeine Informationen

|   |   |   |
|---|---|---|
| <b>Katalog-Nr.:</b><br>CL488-60197                                      | <b>GenBank-Zugangsnummer:</b><br>BC024181                   | <b>Reinigungsmethode:</b><br>Protein-G-Reinigung                        |
| <b>Größe:</b><br>100ul , Konzentration: 1000 µg/ml von2100<br>Nanodrop; | <b>GeneID (NCBI):</b><br>estrogen receptor 2 (ER beta)      | <b>CloneNo.:</b><br>5D2C9   |
| <b>Wirt:</b><br>Maus  | <b>Vollständiger Name:</b><br>estrogen receptor 2 (ER beta) | <b>Anregungs-/Emissionsmaxima-<br/>Wellenlängen:</b><br>493 nm / 522 nm |
| <b>Isotyp:</b><br>IgG1  | <b>Berechnete Masse:</b><br>59 kDa                          |   |
| <b>Immunogen Katalognummer:</b><br>AG5103                               | <b>Beobachtete Masse:</b><br>50 kDa                         |   |

## Anwendungen

**Geprüfte Anwendungen:**  
FC (Intra)

**Getestete Reaktivität:**  
Human, Maus

## Hintergrundinformationen

Estrogen receptor-beta (ESR2) is a member of the superfamily of nuclear receptors, which can transduce extracellular signals into transcriptional responses. It binds estrogens with an affinity similar to that of ESR1, and activates expression of reporter genes containing estrogen response elements (ERE) in an estrogen-dependent manner. DNA-binding by ESR1 and ESR2 is rapidly lost at 37 degrees Celsius in the absence of ligand while in the presence of 17 beta-estradiol and 4-hydroxy-tamoxifen loss in DNA-binding at elevated temperature is more gradual. ESR2 exists various isoform and range of calculated molecular weight of isoforms is 50-60 kDa. The experiment detected two bands for ESR2 in isolated human germ cells, one at 60 kDa and a weaker one at 50 kDa (PMID: 14766008).

## Lagerung

**Lagerungsbedingungen:**  
Bei -20°C lagern. Vor Licht schützen. Nach dem Versand ein Jahr stabil.  
**Lagerungspuffer:**  
BS mit 50% Glycerin, 0,05% Proclin300, 0,5% BSA, pH 7,3.  
**Aliquotieren ist nicht notwendig bei -20°C Lagerung**

**\*\*\* 20ul-Größen enthalten 0.1% BSA**

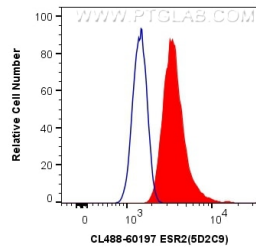
For technical support and original validation data for this product please contact:

T: 1 (888) 4PTGLAB (1-888-478-4522) (toll free  
in USA), or 1(312) 455-8498 (outside USA)

E: [proteintech@ptglab.com](mailto:proteintech@ptglab.com)  
W: [ptglab.com](http://ptglab.com)

**This product is exclusively available under Proteintech Group brand and is not available to purchase from any other manufacturer.**

## Ausgewählte Validierungsdaten



1X10<sup>6</sup> MCF-7 cells were intracellularly stained with 0.4 ug CoraLite® Plus 488 Anti-Human ESR2 (CL488-60197, Clone:5D2C9) (red), or 0.4 ug Control Antibody. Cells were fixed and permeabilized with Transcription Factor Staining Buffer Kit (PF00011).