

Nur für Forschungszwecke

# LYN Monoklonaler Antikörper

Katalog-Nr.:CL488-60211



## Allgemeine Informationen

<b>Katalog-Nr.:</b> CL488-60211	<b>GenBank-Zugangsnummer:</b> BC075002	<b>Reinigungsmethode:</b> Protein-A-Reinigung
<b>Größe:</b> 100ul , Konzentration: 1000 µg/ml von4067 Nanodrop;	<b>GeneID (NCBI):</b> 4067	<b>CloneNo.:</b> 3C7F2
<b>Wirt:</b> Maus	<b>Vollständiger Name:</b> v-yes-1 Yamaguchi sarcoma viral related oncogene homolog	<b>Empfohlene Verdünnungen:</b> IF 1:50-1:500
<b>Isotyp:</b> IgG2a	<b>Berechnete Masse:</b> 512 aa, 59 kDa	<b>Anregungs-/Emissionsmaxima- Wellenlängen:</b> 493 nm / 522 nm
<b>Immunogen Katalognummer:</b> AG12723	<b>Beobachtete Masse:</b> 56 kDa	

## Anwendungen

<b>Geprüfte Anwendungen:</b> FC (Intra), IF	<b>Positivkontrollen:</b> IF : HepG2-Zellen,
<b>Getestete Reaktivität:</b> Human, Maus	

## Hintergrundinformationen

LYN, also named as JTK8, p53Lyn and p56Lyn, belongs to the protein kinase superfamily, Tyr protein kinase family and SRC subfamily. It is a non-receptor tyrosine-protein kinase that transmits signals from cell surface receptors and plays an important role in the regulation of innate and adaptive immune responses, hematopoiesis, responses to growth factors and cytokines, integrin signaling, but also responses to DNA damage and genotoxic agents. LYN is a component of the mTOR (mammalian target of rapamycin) pathway.

## Lagerung

**Lagerungsbedingungen:**  
Bei -20°C lagern. Vor Licht schützen. Nach dem Versand ein Jahr stabil.  
**Lagerungspuffer:**  
BS mit 50% Glycerin, 0,05% Proclin300, 0,5% BSA, pH 7,3.  
**Aliquotieren ist nicht notwendig bei -20°C Lagerung**

**\*\*\* 20ul-Größen enthalten 0.1% BSA**

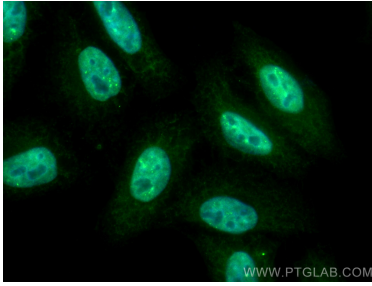
For technical support and original validation data for this product please contact:

T: 1 (888) 4PTGLAB (1-888-478-4522) (toll free  
in USA), or 1(312) 455-8498 (outside USA)

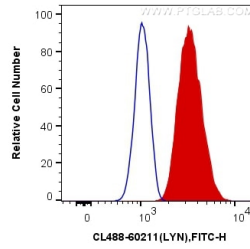
E: proteintech@ptglab.com  
W: ptglab.com

**This product is exclusively available under Proteintech Group brand and is not available to purchase from any other manufacturer.**

## Ausgewählte Validierungsdaten



Immunofluorescent analysis of (4% PFA) fixed HepG2 cells using CoraLite® Plus 488 LYN antibody (CL488-60211, Clone: 3C7F2) at dilution of 1:200.



1X10<sup>6</sup> Ramos cells were intracellularly stained with 0.8 ug CoraLite® Plus 488 Anti-Human LYN (CL488-60211, Clone:3C7F2) (red), or 0.8 ug Mouse IgG2a Isotype Control (CL488-66360-2, Clone: K11A1B2A2) (blue). Cells were fixed and permeabilized with Transcription Factor Staining Buffer Kit (PF00011).