

Nur für Forschungszwecke

PKM2-specific Monoklonaler Antikörper



Katalog-Nr.:CL488-60268

Vorgestelltes Produkt

1 Publikationen

Allgemeine Informationen

Katalog-Nr.: CL488-60268	GenBank-Zugangsnummer: NM_002654	Reinigungsmethode: Protein-G-Reinigung
Größe: 100ul , Konzentration: 1000 µg/ml von5315 Nanodrop;	GeneID (NCBI): 5315	CloneNo.: 1C11C7
Wirt: Maus	Vollständiger Name: PKM pyruvate kinase, muscle	Empfohlene Verdünnungen: IF 1:50-1:500
Isotyp: IgG1	Berechnete Masse: 58 kDa	Anregungs-/Emissionsmaxima-Wellenlängen: 493 nm / 522 nm
	Beobachtete Masse: 58 kDa	

Anwendungen

Geprüfte Anwendungen: FC (Intra), IF	Positivkontrollen: IF : L02-Zellen, HepG2-Zellen
In Publikationen genannte Anwendungen: IF	
Getestete Reaktivität: Human, Maus, Ratte	
Zitierte Arten: Maus	

Hintergrundinformationen

PKM, also named as OIP3, PK2, PK3, PKM, p58, THBP1, CTHBP and Tumor M2-PK, belongs to the pyruvate kinase family. It is glycolytic enzyme that catalyzes the transfer of a phosphoryl group from phosphoenolpyruvate (PEP) to ADP, generating ATP. It stimulates POU5F1-mediated transcriptional activation. PKM plays a general role in caspase independent cell death of tumor cells. PKM has 2 isoforms named as PKM1/M2. The activity of the M2 isoform can be inhibited by tyrosine kinase signalling in tumourcells. The primary pyruvate kinase isoform before tumour development is PK-M1; however, the primary isoform from four independent tumours is PK-M2 (PMID:18337823). The immunogen of this antibody is M2 isoform and this antibody is specific to PKM2 isoform.

Bemerkenswerte Veröffentlichungen

Verfasser	Pubmed ID	Journal	Anwendung
Khrystyna Sych	36633604	J Mol Med (Berl)	IF

Lagerung

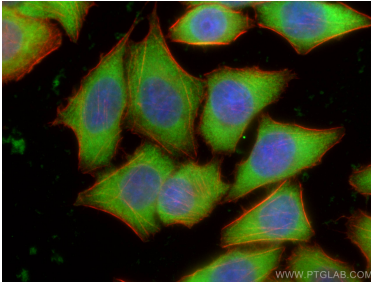
Lagerungsbedingungen:
Bei -20°C lagern. Vor Licht schützen. Nach dem Versand ein Jahr stabil.
Lagerungspuffer:
BS mit 50% Glycerin, 0,05% Proclin300, 0,5% BSA, pH 7,3.
Aliquotieren ist nicht notwendig bei -20°C Lagerung

*** 20ul-Größen enthalten 0.1% BSA

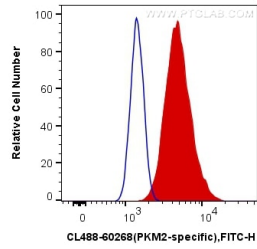
For technical support and original validation data for this product please contact:
T: 1 (888) 4PTGLAB (1-888-478-4522) (toll free in USA), or 1(312) 455-8498 (outside USA)
E: proteintech@ptglab.com
W: ptglab.com

This product is exclusively available under Proteintech Group brand and is not available to purchase from any other manufacturer.

Ausgewählte Validierungsdaten



Immunofluorescent analysis of (-20°C Ethanol) fixed L02 cells using CoraLite® Plus 488-conjugated PKM2-specific antibody (CL488-60268, Clone: 1C11C7) at dilution of 1:100, CL594-Phalloidin (red).



1X10⁶ HeLa cells were intracellularly stained with 0.4 ug CoraLite® Plus 488 Anti-Human PKM2-specific (CL488-60268, Clone:1C11C7) (red), or 0.4 ug Mouse IgG1 Isotype Control (CL488-66360, Clone: T1F8D3F10) (blue). Cells were fixed with 4% PFA and permeabilized with Flow Cytometry Perm Buffer (PF00011-C).