

Nur für Forschungszwecke

Thyroglobulin Monoklonaler Antikörper

Katalog-Nr.:CL488-60272



Allgemeine Informationen

Katalog-Nr.: CL488-60272	GenBank-Zugangsnummer: BC140933	Reinigungsmethode: Protein-A-Reinigung
Größe: 100ul , Konzentration: 1000 µg/ml von7038 Nanodrop;	GeneID (NCBI): thyroglobulin	CloneNo.: 4D3C5
Wirt: Maus	Vollständiger Name: thyroglobulin	Empfohlene Verdünnungen: IF 1:50-1:500
Isotyp: IgG2a	Berechnete Masse: 2768 aa, 305 kDa	Anregungs-/Emissionsmaxima-Wellenlängen: 493 nm / 522 nm
Immunogen Katalognummer: AG18070		

Anwendungen

Geprüfte Anwendungen: IF	Positivkontrollen: IF : humanes Schilddrüsenkarzinomgewebe,
Getestete Reaktivität: Human	

Hintergrundinformationen

Thyroglobulin (Tg) is a glycoprotein homodimer produced predominantly by the thyroid gland. It acts as a substrate for the synthesis of thyroxine and triiodothyronine as well as the storage of the inactive forms of thyroid hormone and iodine. Thyroglobulin is secreted from the endoplasmic reticulum to its site of iodination, and subsequent thyroxine biosynthesis, in the follicular lumen. Mutations in this gene cause thyroid dysmorphogenesis, manifested as goiter, and are associated with moderate to severe congenital hypothyroidism. Polymorphisms in this gene are associated with susceptibility to autoimmune thyroid diseases (AITD) such as Graves disease and Hashimoto thyroiditis.

Lagerung

Lagerungsbedingungen:
Bei -20°C lagern. Vor Licht schützen.
Lagerungspuffer:
BS mit 50% Glycerin, 0,05% Proclin300, 0,5% BSA, pH 7,3.
Aliquotieren ist nicht notwendig bei -20°C Lagerung

***** 20ul-Größen enthalten 0.1% BSA**

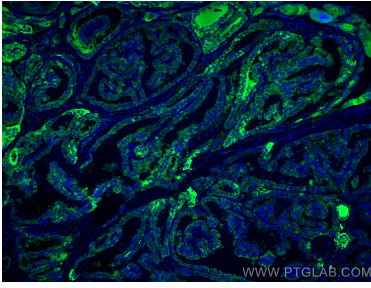
For technical support and original validation data for this product please contact:

T: 1 (888) 4PTGLAB (1-888-478-4522) (toll free in USA), or 1(312) 455-8498 (outside USA)

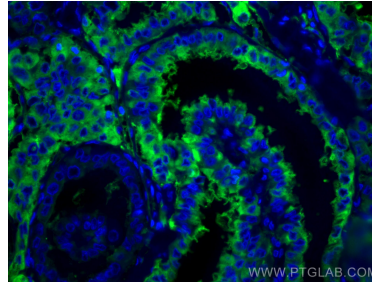
E: proteintech@ptglab.com
W: ptglab.com

This product is exclusively available under Proteintech Group brand and is not available to purchase from any other manufacturer.

Ausgewählte Validierungsdaten



Immunofluorescent analysis of (4% PFA) fixed human thyroid cancer tissue using CoraLite® Plus 488 Thyroglobulin antibody (CL488-60272, Clone: 4D3C5) at dilution of 1:200.



Immunofluorescent analysis of (4% PFA) fixed human thyroid cancer tissue using CoraLite® Plus 488 Thyroglobulin antibody (CL488-60272, Clone: 4D3C5) at dilution of 1:200.