

Nur für Forschungszwecke

# pan Ras Monoklonaler Antikörper

Katalog-Nr.:CL488-60309

Vorgestelltes Produkt



## Allgemeine Informationen

|   |   |   |
|---|---|---|
| <b>Katalog-Nr.:</b><br>CL488-60309                                      | <b>GenBank-Zugangsnummer:</b><br>BC013572   | <b>Reinigungsmethode:</b><br>Protein-G-Reinigung                        |
| <b>Größe:</b><br>100ul , Konzentration: 1000 µg/ml von3845<br>Nanodrop; | <b>GeneID (NCBI):</b><br>v-Ki-ras2 Kirsten rat sarcoma viral<br>oncogene homolog      | <b>CloneNo.:</b><br>4H4G7   |
| <b>Wirt:</b><br>Maus  | <b>Vollständiger Name:</b><br>v-Ki-ras2 Kirsten rat sarcoma viral<br>oncogene homolog | <b>Anregungs-/Emissionsmaxima-<br/>Wellenlängen:</b><br>493 nm / 522 nm |
| <b>Isotyp:</b><br>IgG1  | <b>Berechnete Masse:</b><br>188 aa, 21 kDa  |   |
| <b>Immunogen Katalognummer:</b><br>AG2700                               |   |   |

## Anwendungen

**Geprüfte Anwendungen:**  
FC (Intra)

**Getestete Reaktivität:**  
Hausschwein, Human, Maus, Ratte

## Hintergrundinformationen

The 21 kDa guanine-nucleotide binding proteins (K-Ras, H-Ras, and N-Ras) belong to the Ras oncogene family, whose members are related to the transforming genes of mammalian sarcoma retroviruses. K-Ras, H-Ras, and N-Ras have similar structure and sequences. These proteins can bind GTP and GDP, and they have intrinsic GTPase activity. The ras genes are ubiquitously expressed although mRNA analysis suggests different level expression in tissue. Mutations in each ras gene frequently were found in different tumors, suggesting their involvement in the development of specific neoplasia. This antibody can recognize K-Ras, H-Ras, and N-Ras.

## Lagerung

**Lagerungsbedingungen:**  
Bei -20°C lagern. Vor Licht schützen. Nach dem Versand ein Jahr stabil.

**Lagerungspuffer:**  
BS mit 50% Glycerin, 0,05% Proclin300, 0,5% BSA, pH 7,3.

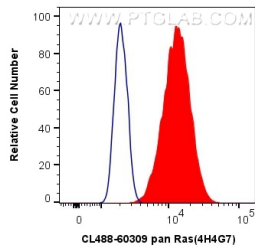
**Aliquotieren ist nicht notwendig bei -20°C Lagerung**

**\*\*\* 20ul-Größen enthalten 0.1% BSA**

For technical support and original validation data for this product please contact:  
T: 1 (888) 4PTGLAB (1-888-478-4522) (toll free in USA), or 1(312) 455-8498 (outside USA) E: proteintech@ptglab.com W: ptglab.com

This product is exclusively available under Proteintech Group brand and is not available to purchase from any other manufacturer.

## Ausgewählte Validierungsdaten



1X10<sup>6</sup> HeLa cells were intracellularly stained with 0.4 ug CoraLite® Plus 488 Anti-Human pan Ras (CL488-60309, Clone:4H4G7) (red), or 0.4 ug Control Antibody. Cells were fixed with 4% PFA and permeabilized with Flow Cytometry Perm Buffer (PF00011-C).