

Nur für Forschungszwecke

HER2/ErbB2 Monoklonaler Antikörper

Katalog-Nr.:CL488-60311



Allgemeine Informationen

Katalog-Nr.: CL488-60311	GenBank-Zugangsnummer: BC156755	Reinigungsmethode: Protein-A-Reinigung
Größe: 100ul , Konzentration: 1000 µg/ml von2064 Nanodrop;	GeneID (NCBI): v-erb-b2 erythroblastic leukemia viral oncogene homolog 2, neuro/glioblastoma derived oncogene homolog (avian)	CloneNo.: 1B12A7
Wirt: Maus	Vollständiger Name: v-erb-b2 erythroblastic leukemia viral oncogene homolog 2, neuro/glioblastoma derived oncogene homolog (avian)	Empfohlene Verdünnungen: IF 1:50-1:500
Isotyp: IgG2b	Berechnete Masse: 1255 aa, 138 kDa	Anregungs-/Emissionsmaxima- Wellenlängen: 493 nm / 522 nm
Immunogen Katalognummer: AG16463		

Anwendungen

Geprüfte Anwendungen: FC, IF	Positivkontrollen: IF : humanes Mammakarzinomgewebe,
Getestete Reaktivität: Human	

Hintergrundinformationen

HER2, also known as ErbB2 and Neu, is a 185-kDa transmembrane glycoprotein that is a member of the epidermal growth factor (EGF) receptor family of receptor tyrosine kinases. It has no ligand binding domain of its own and therefore cannot bind growth factors. However, it does bind tightly to other ligand-bound EGF receptor family members to form a heterodimer, stabilizing ligand binding and enhancing kinase-mediated activation of downstream signalling pathways, such as those involving mitogen-activated protein kinase and phosphatidylinositol-3 kinase. Amplification and/or overexpression of HER2 have been reported in numerous cancers, including breast and ovarian tumors. HER2 is a therapeutic target for the treatment of breast cancer and other carcinomas.

Lagerung

Lagerungsbedingungen:
Bei -20°C lagern. Vor Licht schützen. Nach dem Versand ein Jahr stabil.
Lagerungspuffer:
BS mit 50% Glycerin, 0,05% Proclin300, 0,5% BSA, pH 7,3.
Aliquotieren ist nicht notwendig bei -20°C Lagerung

*** 20ul-Größen enthalten 0.1% BSA

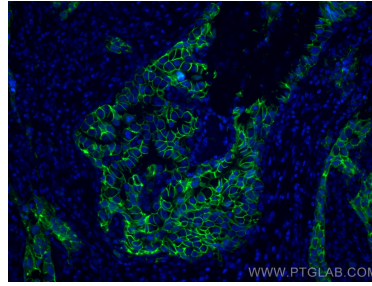
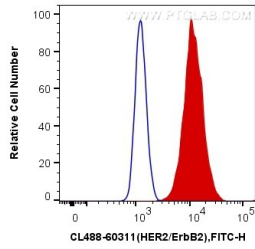
For technical support and original validation data for this product please contact:

T: 1 (888) 4PTGLAB (1-888-478-4522) (toll free
in USA), or 1(312) 455-8498 (outside USA)

E: proteintech@ptglab.com
W: ptglab.com

This product is exclusively available under Proteintech Group brand and is not available to purchase from any other manufacturer.

Ausgewählte Validierungsdaten



1X10⁶ SK-BR-3 cells were surface stained with 0.4 ug CoraLite® Plus 488 Anti-Human HER2/ ErbB2 (CL488-60311, Clone:1B12A7) (red), or 0.4 ug Mouse IgG2b Isotype Control (CL488-66360-3, Clone: K11B8C4B5) (blue). Cells were not fixed.

Immunofluorescent analysis of (4% PFA) fixed human breast cancer tissue using CoraLite® Plus 488 HER2/ ErbB2 antibody (CL488-60311, Clone: 1B12A7) at dilution of 1:200.