

Nur für Forschungszwecke

c-SRC Monoklonaler Antikörper

Katalog-Nr.:CL488-60315



Allgemeine Informationen

| | | |
|---|--|---|
| Katalog-Nr.: CL488-60315 | GenBank-Zugangsnummer: BC011566 | Reinigungsmethode: Protein-A-Reinigung |
| Größe: 100ul , Konzentration: 2000 µg/ml von6714 Nanodrop; | GeneID (NCBI): v-src sarcoma (Schmidt-Ruppin A-2) viral oncogene homolog (avian) | CloneNo.: 5E10C4 |
| Wirt: Maus | Vollständiger Name: v-src sarcoma (Schmidt-Ruppin A-2) viral oncogene homolog (avian) | Anregungs-/Emissionsmaxima- Wellenlängen: 493 nm / 522 nm |
| Isotyp: IgG2b | Berechnete Masse: 60 kDa | |
| Immunogen Katalognummer: AG22306 | Beobachtete Masse: 60 kDa | |

Anwendungen

Geprüfte Anwendungen:
FC (Intra)

Getestete Reaktivität:
Hamster, Human, Maus

Hintergrundinformationen

SRC, also named as SRC1 and p60-Src, belongs to the protein kinase superfamily, Tyr protein kinase family and SRC subfamily. It is a non-receptor protein tyrosine kinase that plays pivotal roles in numerous cellular processes such as proliferation, migration, and transformation. In concert with PTK2B, SRC plays an important role in osteoclastic bone resorption. It promotes energy production in osteoclasts by activating mitochondrial cytochrome C oxidase.

Lagerung

Lagerungsbedingungen:
Bei -20°C lagern. Vor Licht schützen. Nach dem Versand ein Jahr stabil.

Lagerungspuffer:
BS mit 50% Glycerin, 0,05% Proclin300, 0,5% BSA, pH 7,3.

Aliquotieren ist nicht notwendig bei -20°C Lagerung

*** 20ul-Größen enthalten 0.1% BSA

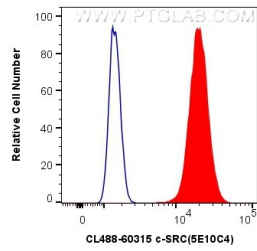
For technical support and original validation data for this product please contact:

T: 1 (888) 4PTGLAB (1-888-478-4522) (toll free
in USA), or 1(312) 455-8498 (outside USA)

E: proteintech@ptglab.com
W: ptglab.com

This product is exclusively available under Proteintech Group brand and is not available to purchase from any other manufacturer.

Ausgewählte Validierungsdaten



1X10⁶ MCF-7 cells were intracellularly stained with 0.4 ug CoraLite® Plus 488 Anti-Human c-SRC (CL488-60315, Clone:5E10C4) (red), or 0.4 ug Mouse IgG2b Isotype Control (CL488-66360-3, Clone: K11B8C4B5) (blue). Cells were fixed with 4% PFA and permeabilized with Flow Cytometry Perm Buffer (PF00011-C).