

Nur für Forschungszwecke

LIN28 Monoklonaler Antikörper

Katalog-Nr.:CL488-60344



Allgemeine Informationen

Katalog-Nr.: CL488-60344	GenBank-Zugangsnummer: BC028566	Reinigungsmethode: Protein-G-Reinigung
Größe: 100ul , Konzentration: 1000 µg/ml von79727 Nanodrop;	GeneID (NCBI): von79727	CloneNo.: 4F5G6
Wirt: Maus	Vollständiger Name: lin-28 homolog (C. elegans)	Empfohlene Verdünnungen: IF 1:50-1:500
Isotyp: IgG1	Berechnete Masse: 209 aa, 23 kDa	Anregungs-/Emissionsmaxima-Wellenlängen: 493 nm / 522 nm
Immunogen Katalognummer: AG2312	Beobachtete Masse: 28 kDa	

Anwendungen

Geprüfte Anwendungen: IF	Positivkontrollen: IF : humanes Prostatakarzinomgewebe,
Getestete Reaktivität: Human	

Hintergrundinformationen

LIN28 is one of the four key human factors (OCT4, SOX2, NANOG and LIN28) used to reprogram human fibroblasts to an embryonic stem (ES) cell-like state known as the induced pluripotent stem (Ips) cell. Lin28 is a marker of undifferentiated human embryonic stem cells and a cytoplasmic Mrna-binding protein that binds to and enhances the translation of the IGF2 Mrna. LIN28 has also been shown to bind to the let-7 pre-miRNA and block production of the mature let-7 microRNA in mouse embryonic stem cells. The calculated molecular weight of LIN28 is 23 kDa, but the modified LIN28 is about 28 kDa.

Lagerung

Lagerungsbedingungen:
Bei -20°C lagern. Vor Licht schützen.
Lagerungspuffer:
BS mit 50% Glycerin, 0,05% Proclin300, 0,5% BSA, pH 7,3.
Aliquotieren ist nicht notwendig bei -20°C Lagerung

*** 20ul-Größen enthalten 0.1% BSA

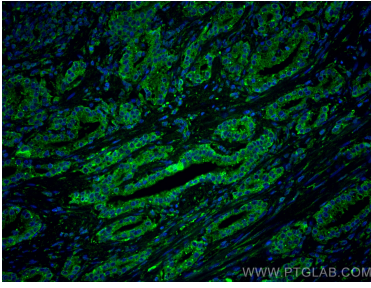
For technical support and original validation data for this product please contact:

T: 1 (888) 4PTGLAB (1-888-478-4522) (toll free in USA), or 1(312) 455-8498 (outside USA)

E: proteintech@ptglab.com
W: ptglab.com

This product is exclusively available under Proteintech Group brand and is not available to purchase from any other manufacturer.

Ausgewählte Validierungsdaten



Immunofluorescent analysis of (4% PFA) fixed human prostate cancer tissue using CoraLite® Plus 488 LIN28 antibody (CL488-60344, Clone: 4F5G6) at dilution of 1:200.