

Nur für Forschungszwecke

CD11b Monoklonaler Antikörper

Katalog-Nr.:CL488-65055

1 Publikationen



Allgemeine Informationen

Katalog-Nr.: CL488-65055	GenBank-Zugangsnummer: BC156991	Reinigungsmethode: Affinitätsreinigung
Größe: 100tests , 5 µl/test	GeneID (NCBI): 16409	CloneNo.: M1/70
Wirt: Ratte	Vollständiger Name: integrin alpha M	Empfohlene Verdünnungen: IF 1:200-1:800
Isotyp: IgG2b, kappa		Anregungs-/Emissionsmaxima-Wellenlängen: 493 nm / 522 nm

Anwendungen

Geprüfte Anwendungen: FC, IF	Positivkontrollen: IF : Maus-Splenozyten,
In Publikationen genannte Anwendungen: FC	
Getestete Reaktivität: Human, Maus	
Zitierte Arten: Maus	

Hintergrundinformationen

Integrins are cell adhesion receptors that are heterodimers composed of non-covalently associated α and β subunits (PMID: 9779984). CD11b, also known as Integrin alpha M or CR3A, belongs to the integrin alpha chain family. CD11b forms an α/β heterodimer with CD18 (integrin β 2). CD11b/CD18 is implicated in various adhesive interactions of monocytes, macrophages and granulocytes as well as in mediating the uptake of complement-coated particles and pathogens (PMID: 9558116; 20008295). CD11b/CD18 is a receptor for the complement protein fragment iC3b, and is also a receptor for fibrinogen, factor X and ICAM1 (PMID: 2971974; 15485828).

Bemerkenswerte Veröffentlichungen

Verfasser	Pubmed ID	Journal	Anwendung
Luqiu Feng	36918933	Vet Res	FC

Lagerung

Lagerungsbedingungen:
Store at 2-8°C. Avoid exposure to light. Stable for one year after shipment.
Lagerungspuffer:
PBS mit 0,1% Natriumazid und 0,5% BSA, pH 7,3.

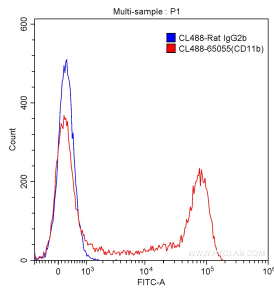
For technical support and original validation data for this product please contact:

T: 1 (888) 4PTGLAB (1-888-478-4522) (toll free in USA), or 1(312) 455-8498 (outside USA)

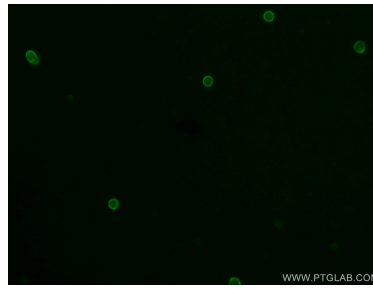
E: proteintech@ptglab.com
W: ptglab.com

This product is exclusively available under Proteintech Group brand and is not available to purchase from any other manufacturer.

Ausgewählte Validierungsdaten



1×10^6 C57BL/6 mouse bone marrow cells were surface stained with 5.00 μ l CoraLite® Plus 488-conjugated Anti-Mouse CD11b (CL488-65055, Clone: M1/70) (red) or isotype control antibody (blue). Cells were not fixed.



Immunofluorescent analysis of mouse splenocytes using CoraLite® Plus 488-conjugated Anti-Mouse CD11b (CL488-65055, Clone: M1/70) at dilution of 1:400.