

Nur für Forschungszwecke

CD49b Monoklonaler Antikörper

Katalog-Nr.:CL488-65065



Allgemeine Informationen

Katalog-Nr.: CL488-65065	GenBank-Zugangsnummer: BC065139	Reinigungsmethode: Affinitätsreinigung
Größe: 100tests , 5 µl/test	GeneID (NCBI): 16398	CloneNo.: DX5
Wirt: Ratte	Vollständiger Name: integrin alpha 2	Anregungs-/Emissionsmaxima-Wellenlängen: 493 nm / 522 nm
Isotyp: IgM		

Anwendungen

Geprüfte Anwendungen:
FC

Getestete Reaktivität:
Maus

Hintergrundinformationen

Integrins are a large family of α/β transmembrane receptors playing a key role in cell-cell interactions and cell adhesion to the extracellular matrix (PMID: 30374344). CD49b, also known as integrin alpha-2, is a 150 kDa transmembrane glycoprotein expressed on a wide variety of cell types including platelets, megakaryocytes, NK cells, NKT cells, neutrophils, and long-term activated T cells (PMID: 18802064; 2415516). Integrin alpha-2/beta-1 (also known as VLA-2) is a receptor for laminin, collagen, collagen C-propeptides, fibronectin and E-cadherin (PMID: 2557634). It is responsible for adhesion of platelets and other cells to collagens, modulation of collagen and CLG gene expression, force generation and organization of newly synthesized extracellular matrix.

Lagerung

Lagerungsbedingungen:
Bei 2-8°C lagern. Vor Licht schützen.

Lagerungspuffer:
PBS mit 0,1% Natriumazid und 0,5% BSA, pH 7,3.

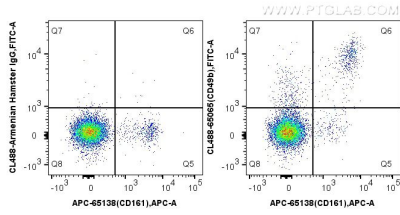
For technical support and original validation data for this product please contact:

T: 1 (888) 4PTGLAB (1-888-478-4522) (toll free in USA), or 1(312) 455-8498 (outside USA)

E: proteintech@ptglab.com
W: ptglab.com

This product is exclusively available under Proteintech Group brand and is not available to purchase from any other manufacturer.

Ausgewählte Validierungsdaten



1X10⁶ mouse splenocytes were surface stained with APC Anti-Mouse NK1.1 (CD161) (PK136) (APC-65138, Clone: PK136) and CoraLite® Plus 488-conjugated Rat IgM isotype control antibody (left) or 5.00 ul CoraLite® Plus 488-conjugated Anti-Mouse CD49b (CL488-65065, Clone: DX5) (right). Cells were not fixed.