

Nur für Forschungszwecke

CD45.2 Monoklonaler Antikörper

Katalog-Nr.:CL488-65072



Allgemeine Informationen

Katalog-Nr.: CL488-65072	GenBank-Zugangsnummer: BC028512	Reinigungsmethode: Affinitätsreinigung
Größe: 100tests , 5 µl/test	GeneID (NCBI): 19264	CloneNo.: 104
Wirt: Maus	Vollständiger Name: protein tyrosine phosphatase, receptor type, C	Anregungs-/Emissionsmaxima- Wellenlängen: 493 nm / 522 nm
Isotyp: IgG2a, kappa		

Anwendungen

Geprüfte Anwendungen:
FC

Getestete Reaktivität:
Maus

Hintergrundinformationen

CD45, also known as protein tyrosine phosphatase, receptor type C, is a type I transmembrane protein expressed on the surface of all haematopoietic cells with the exception of erythrocytes and platelets (PMID: 3489673; 28615666). CD45 is a pan-haematopoietic cell marker and has been shown to be essential for T- and B-cell activation and signalling (PMID: 9429890; 16378097). Allelic variants of mouse CD45, CD45.1 (Ly5.1) and CD45.2 (Ly5.1), have been established as a marker system to track haematopoietic cells following congenic mouse bone marrow transplants (PMID: 28615666). CD45.2 is the common form and is expressed by most of the established strains, while CD45.1 is found in only a few like the SJL mouse strain (PMID: 3489673).

Lagerung

Lagerungsbedingungen:
Store at 2-8°C. Avoid exposure to light. Stable for one year after shipment.

Lagerungspuffer:
PBS mit 0,1% Natriumazid und 0,5% BSA, pH 7,3.

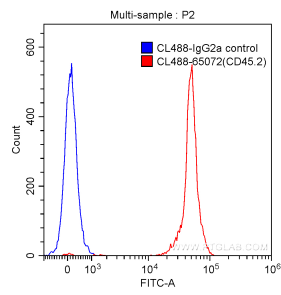
For technical support and original validation data for this product please contact:

T: 1 (888) 4PTGLAB (1-888-478-4522) (toll free
in USA), or 1(312) 455-8498 (outside USA)

E: proteintech@ptglab.com
W: ptglab.com

This product is exclusively available under Proteintech Group brand and is not available to purchase from any other manufacturer.

Ausgewählte Validierungsdaten



1X10⁶ C57BL/6 mouse splenocytes were surface stained with 5.00 ul CoraLite® Plus 488-conjugated Anti-Mouse CD45.2 (CL488-65072, Clone:104) (red) or isotype control antibody (blue). Cells were not fixed.