

Nur für Forschungszwecke

KLRG1 Monoklonaler Antikörper

Katalog-Nr.:CL488-65084



Allgemeine Informationen

Katalog-Nr.: CL488-65084	GenBank-Zugangsnummer: BC101953	Reinigungsmethode: Affinitätsreinigung
Größe: 100tests , 5 µl/test	GeneID (NCBI): 50928	CloneNo.: 2F1
Wirt: Golden Syrian Hamster	Vollständiger Name: killer cell lectin-like receptor subfamily G, member 1	Anregungs-/Emissionsmaxima- Wellenlängen: 493 nm / 522 nm
Isotyp: IgG		

Anwendungen

Geprüfte Anwendungen:
FC
Getestete Reaktivität:
Maus

Hintergrundinformationen

KLRG1 (killer cell lectin-like receptor subfamily G, member 1) is a C-type lectin inhibitory receptor that contains an immunoreceptor tyrosine-based inhibitory motif (ITIM) in its cytoplasmic domain. KLRG1 is expressed by subsets of NK and T cells, existing both as a monomer and as a disulfide-linked homodimer (PMID: 10741410; 19604491). It is considered to be a cell differentiation marker for NK and T cells and is strongly induced by viral and other infections (PMID: 20373518). Through interactions with members of the cadherin family, KLRG1 plays an inhibitory role on NK- and T-cell function (PMID: 19009530; 20373518).

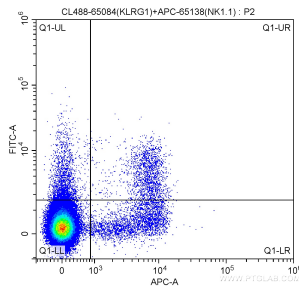
Lagerung

Lagerungsbedingungen:
Store at 2-8°C. Avoid exposure to light. Stable for one year after shipment.
Lagerungspuffer:
PBS mit 0,1% Natriumazid und 0,5% BSA, pH 7,3.

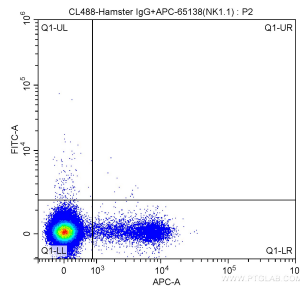
For technical support and original validation data for this product please contact:
T: 1 (888) 4PTGLAB (1-888-478-4522) (toll free in USA), or 1(312) 455-8498 (outside USA)
E: proteintech@ptglab.com
W: ptglab.com

This product is exclusively available under Proteintech Group brand and is not available to purchase from any other manufacturer.

Ausgewählte Validierungsdaten



1X10⁶ mouse splenocytes were surface stained with APC Anti-Mouse NK1.1 (CD161) (APC-65138, Clone: PK136) and 5 ul CoraLite® Plus 488 Anti-Mouse KLRG1 (CL488-65084, Clone: 2F1). Cells were not fixed.



1X10⁶ mouse splenocytes were surface stained with APC Anti-Mouse NK1.1 (CD161) (APC-65138, Clone: PK136) and CoraLite® Plus 488 conjugated Hamster IgG isotype control. Cells were not fixed.