

Nur für Forschungszwecke

# FceR1 Monoklonaler Antikörper

Katalog-Nr.:CL488-65091



## Allgemeine Informationen

<b>Katalog-Nr.:</b> CL488-65091	<b>GenBank-Zugangsnummer:</b> BC125455	<b>Reinigungsmethode:</b> Affinitätsreinigung
<b>Größe:</b> 100tests , 5 µl/test	<b>GeneID (NCBI):</b> 14125	<b>CloneNo.:</b> MAR-1
<b>Wirt:</b> Armenian Hamster	<b>Vollständiger Name:</b> Fc receptor, IgE, high affinity I, alpha polypeptide	<b>Anregungs-/Emissionsmaxima-Wellenlängen:</b> 493 nm / 522 nm
<b>Isotyp:</b> Armenian Hamster IgG		

## Anwendungen

**Geprüfte Anwendungen:**  
FC

**Getestete Reaktivität:**  
Maus

## Hintergrundinformationen

Fc epsilon Receptor I alpha (FceR1a) is a single-pass type I membrane protein which contains 2 immunoglobulin-like domains. FceR1a forms a tetrameric complex with one beta and two gamma subunits (PMID: 19406478). FceR1 is the high-affinity receptor for the Fc region of immunoglobulin E (IgE) (PMID: 1532373). It is expressed on mast cells and basophils and plays a central role in the allergic response (PMID: 2148316).

## Lagerung

**Lagerungsbedingungen:**  
Bei 2-8°C lagern. Vor Licht schützen.

**Lagerungspuffer:**  
PBS mit 0,1% Natriumazid und 0,5% BSA, pH 7,3.

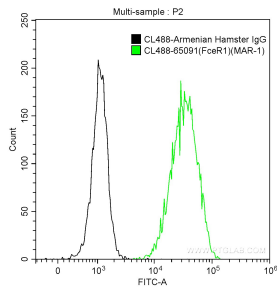
For technical support and original validation data for this product please contact:

T: 1 (888) 4PTGLAB (1-888-478-4522) (toll free in USA), or 1(312) 455-8498 (outside USA)

E: [proteintech@ptglab.com](mailto:proteintech@ptglab.com)  
W: [ptglab.com](http://ptglab.com)

This product is exclusively available under Proteintech Group brand and is not available to purchase from any other manufacturer.

## Ausgewählte Validierungsdaten



1X10<sup>6</sup> MC/9 cells were surface stained with 5 ul CoraLite® Plus 488 Anti-Mouse FcεR1 (CL488-65091, Clone:MAR-1) (green) or CoraLite® Plus 488 Armenian Hamster IgG isotype control (black). Cells were not fixed.