

Nur für Forschungszwecke

CD223 Monoklonaler Antikörper

Katalog-Nr.:CL488-65098



Allgemeine Informationen

Katalog-Nr.: CL488-65098	GenBank-Zugangsnummer: BC120591	Reinigungsmethode: Affinitätsreinigung
Größe: 100tests , 5 µl/test	GeneID (NCBI): 16768	CloneNo.: C9B7W
Wirt: Ratte	Vollständiger Name: Lymphocyte-activation gene 3	Anregungs-/Emissionsmaxima-Wellenlängen: 493 nm / 522 nm
Isotyp: IgG1, kappa		

Anwendungen

Geprüfte Anwendungen:
FC

Getestete Reaktivität:
Maus

Hintergrundinformationen

Lymphocyte activation gene 3 protein (LAG-3), also known as CD223, is a type I transmembrane protein belonging to the immunoglobulin superfamily (PMID: 1692078). It is a CD4-related molecule that binds MHC class II with high affinity (PMID: 1692078; 9159144). LAG-3 is expressed on activated T and NK cells. Besides, natural CD4(+)CD25(+) Tregs express LAG-3 upon activation (PMID: 15485628). LAG-3 negatively regulates T-cell function and homeostasis, and contributes to the suppressor activity of Tregs (PMID: 14644131; 15485628).

Lagerung

Lagerungsbedingungen:
Store at 2-8°C. Avoid exposure to light. Stable for one year after shipment.

Lagerungspuffer:
PBS mit 0,1% Natriumazid und 0,5% BSA, pH 7,3.

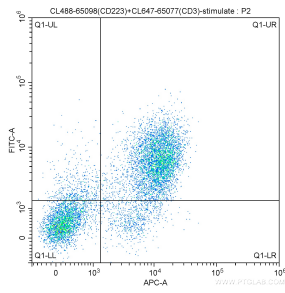
For technical support and original validation data for this product please contact:

T: 1 (888) 4PTGLAB (1-888-478-4522) (toll free in USA), or 1(312) 455-8498 (outside USA)

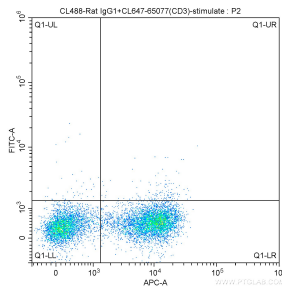
E: proteintech@ptglab.com
W: ptglab.com

This product is exclusively available under Proteintech Group brand and is not available to purchase from any other manufacturer.

Ausgewählte Validierungsdaten



1X10⁶ Con A-stimulated (3 ug/ml Con A, day-3) BALB/c mouse splenocytes were surface stained with CoraLite® Plus 647-Conjugated Anti-Mouse CD3 (CL647-65077, Clone: 17A2) and 5 ul CoraLite® Plus 488 Anti-Mouse CD223 (CL488-65098, Clone: C9B7W). Cells were not fixed.



1X10⁶ Con A-stimulated (3 ug/ml Con A, day-3) BALB/c mouse splenocytes were surface stained with CoraLite® Plus 647-Conjugated Anti-Mouse CD3 (CL647-65077, Clone: 17A2) and CoraLite® Plus 488-Rat IgG1 isotype control. Cells were not fixed.