

Nur für Forschungszwecke

# TCR Beta Monoklonaler Antikörper

Katalog-Nr.:CL488-65106



## Allgemeine Informationen

<b>Katalog-Nr.:</b> CL488-65106	<b>GenBank-Zugangsnummer:</b> GeneID (NCBI): 21577	<b>Reinigungsmethode:</b> Affinitätsreinigung
<b>Größe:</b> 100tests , 5 µl/test	<b>Vollständiger Name:</b> T-cell receptor beta chain	<b>CloneNo.:</b> H57-597
<b>Wirt:</b> Armenian Hamster		<b>Empfohlene Verdünnungen:</b> IF 1:150-1:600
<b>Isotyp:</b> IgG		<b>Anregungs-/Emissionsmaxima-Wellenlängen:</b> 493 nm / 522 nm

## Anwendungen

<b>Geprüfte Anwendungen:</b> IF,FC	<b>Positivkontrollen:</b> IF : Maus-Splenozyten,
<b>Getestete Reaktivität:</b> Maus	

## Hintergrundinformationen

T-cell receptor (TCR) consists of heterodimeric glycoproteins (TCR alpha/beta or gamma/delta) that demonstrate homology with immunoglobulins (PMID: 2144901). TCR beta is a member of the immunoglobulin superfamily and is expressed on alpha/beta TCR-bearing T cells and thymocytes. The TCR heterodimers are noncovalently associated with CD3. The TCR/CD3 complex of T-lymphocytes consists of either a TCR alpha/beta or TCR gamma/delta heterodimer coexpressed at the cell surface with the invariant subunits of CD3 labeled gamma, delta, epsilon, zeta, and eta (PMID: 1826255). The TCR recognizes antigens bound to major histocompatibility complex (MHC) molecules. TCR-mediated peptide-MHC recognition is transmitted to the CD3 complex, leading to the intracellular signal transduction (PMID: 11985657).

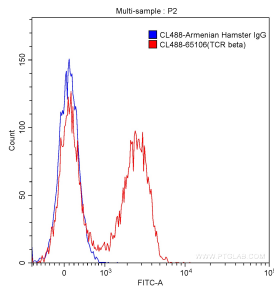
## Lagerung

**Lagerungsbedingungen:**  
Bei 2-8°C lagern. Vor Licht schützen.  
**Lagerungspuffer:**  
PBS mit 0,1% Natriumazid und 0,5% BSA, pH 7,3.

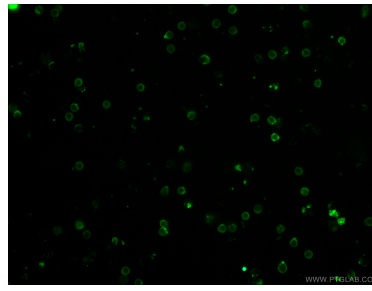
For technical support and original validation data for this product please contact:  
T: 1 (888) 4PTGLAB (1-888-478-4522) (toll free in USA), or 1(312) 455-8498 (outside USA)  
E: proteintech@ptglab.com  
W: ptglab.com

This product is exclusively available under Proteintech Group brand and is not available to purchase from any other manufacturer.

## Ausgewählte Validierungsdaten



$1 \times 10^6$  C57BL/6 mouse splenocytes were surface stained with 5.00  $\mu$ l CoraLite® Plus 488-conjugated Anti-Mouse TCR beta (CL488-65106, Clone: H57-597) (red) or isotype control antibody (blue). Cells were not fixed.



Immunofluorescent analysis of mouse splenocytes using CoraLite® Plus 488-conjugated Anti-Mouse TCR beta (CL488-65106, Clone: H57-597) at dilution of 1:300.