

Nur für Forschungszwecke

# CD8a Monoklonaler Antikörper

Katalog-Nr.:CL488-65113



## Allgemeine Informationen

<b>Katalog-Nr.:</b> CL488-65113	<b>GenBank-Zugangsnummer:</b> BC025715	<b>Reinigungsmethode:</b> Affinitätsreinigung
<b>Größe:</b> 100tests , 5 µl/test	<b>GeneID (NCBI):</b> 925	<b>CloneNo.:</b> Hit8a
<b>Wirt:</b> Maus	<b>Vollständiger Name:</b> CD8a molecule	<b>Empfohlene Verdünnungen:</b> IF 1:200-1:800
<b>Isotyp:</b> IgG1, kappa	<b>Berechnete Masse:</b> 235 aa, 26 kDa	<b>Anregungs-/Emissionsmaxima-Wellenlängen:</b> 493 nm / 522 nm

## Anwendungen

<b>Geprüfte Anwendungen:</b> FC, IF	<b>Positivkontrollen:</b> IF : humane mononukleäre Zellen aus peripherem Blut,
<b>Getestete Reaktivität:</b> Human	

## Hintergrundinformationen

CD8 is a transmembrane glycoprotein composed of two disulfide-linked chains. It can be present as a homodimer of CD8a or as a heterodimer of CD8a and CD8β (PMID: 3264320; 8253791). CD8 is found on most thymocytes. The majority of class I-restricted T cells express mostly the CD8aβ heterodimer while CD8aa homodimers alone have been found on some gut intraepithelial T cells , on some T cell receptor (TCR) γδ T cells and on NK cells (PMID: 2111591; 1831127; 8420975). CD8 acts as a co-receptor that binds to MHC class-I and participates in cytotoxic T cell activation (PMID: 8499079). During T cell development, CD8 is required for positive selection of CD4-/CD8+ T cells (PMID: 1968084).

## Lagerung

**Lagerungsbedingungen:**  
Store at 2-8°C. Avoid exposure to light. Stable for one year after shipment.  
**Lagerungspuffer:**  
PBS mit 0,1% Natriumazid und 0,5% BSA, pH 7,3.

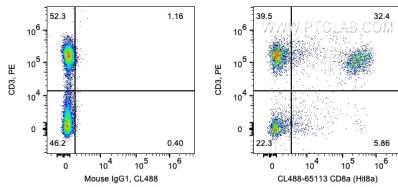
For technical support and original validation data for this product please contact:

T: 1 (888) 4PTGLAB (1-888-478-4522) (toll free in USA), or 1(312) 455-8498 (outside USA)

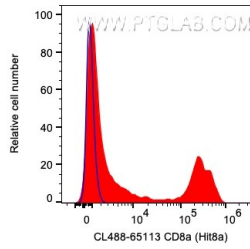
E: [proteintech@ptglab.com](mailto:proteintech@ptglab.com)  
W: [ptglab.com](http://ptglab.com)

This product is exclusively available under Proteintech Group brand and is not available to purchase from any other manufacturer.

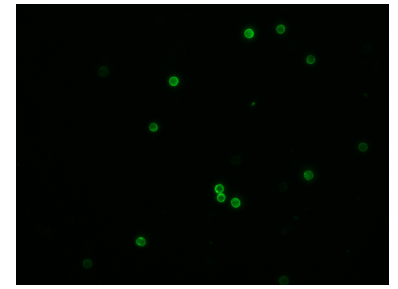
## Ausgewählte Validierungsdaten



1X10<sup>6</sup> human PBMCs were surface co-stained with PE Anti-Human CD3 and 5 ul CoraLite® Plus 488 Anti-Human CD8a (CL488-65113, Clone: Hit8a) or Mouse IgG1 Isotype Control. Cells were not fixed. Lymphocytes were gated.



1X10<sup>6</sup> human PBMCs were surface stained with 5 ul CoraLite® Plus 488 Anti-Human CD8a (CL488-65113, Clone: Hit8a) or Mouse IgG1 Isotype Control. Cells were not fixed. Lymphocytes were gated.



Immunofluorescent analysis of human peripheral blood mononuclear cells (PBMCs) using CoraLite® Plus 488-conjugated Anti-Human CD8a (CL488-65113, clone: Hit8a) at dilution of 1:400.