

Nur für Forschungszwecke

CD163 Monoklonaler Antikörper

Katalog-Nr.:CL488-65169

1 Publikationen



Allgemeine Informationen

Katalog-Nr.: CL488-65169	GenBank-Zugangsnummer: BC051281	Reinigungsmethode: Protein-G-Reinigung
Größe: 100tests , 5 µl/test	GeneID (NCBI): 9332	CloneNo.: GHI/61
Wirt: Maus	Vollständiger Name: CD163 molecule	Anregungs-/Emissionsmaxima-Wellenlängen: 493 nm / 522 nm
Isotyp: Mouse IgG1 kappa	Berechnete Masse: 1156 aa, 125 kDa	

Anwendungen

Geprüfte Anwendungen:
FC

In Publikationen genannte Anwendungen:
FC

Getestete Reaktivität:
Human

Zitierte Arten:
Human

Hintergrundinformationen

CD163, also known as M130, is a membrane glycoprotein which belongs to the scavenger receptor superfamily (PMID: 8370408). It is an acute phase-regulated and signal-inducing macrophage protein expressed exclusively in monocytes and tissue macrophages (PMID: 11196644). CD163 mediates endocytosis of haptoglobin-haemoglobin complexes (PMID: 11196644). The uptake of haptoglobin by macrophages contributes to the recycling of iron and also to the inflammatory response (PMID: 22900885). Soluble CD163 (sCD163), as a result of ectodomain shedding during inflammatory activation of macrophages, circulates in blood and has been suggested as a plasma/serum marker for macrophage activity (PMID: 12570164).

Bemerkenswerte Veröffentlichungen

Verfasser	Pubmed ID	Journal	Anwendung
Shiyang Yuan	36168315	Oncol Lett	FC

Lagerung

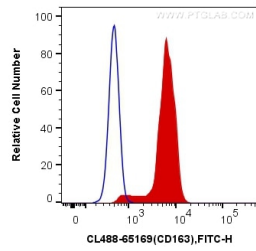
Lagerungsbedingungen:
Bei 2-8°C lagern. Vor Licht schützen.

Lagerungspuffer:
PBS mit 0,1% Natriumazid und 0,5% BSA, pH 7,3.

For technical support and original validation data for this product please contact:
T: 1 (888) 4PTGLAB (1-888-478-4522) (toll free in USA), or 1(312) 455-8498 (outside USA)
E: proteintech@ptglab.com
W: ptglab.com

This product is exclusively available under Proteintech Group brand and is not available to purchase from any other manufacturer.

Ausgewählte Validierungsdaten



1X10⁶ human peripheral blood monocytes were surface stained with 5 ul CoraLite® Plus 488 Anti-Human CD163 (CL488-65169, Clone:GHI/61) (red), or Mouse IgG1 Isotype Control (CL488-66360, Clone: T1F8D3F10) (blue). Cells were not fixed .