

Nur für Forschungszwecke

CD68 Monoklonaler Antikörper

Katalog-Nr.:CL488-65202



Allgemeine Informationen

Katalog-Nr.: CL488-65202	GenBank-Zugangsnummer: BC015557	Reinigungsmethode: Protein-G-Reinigung
Größe: 100tests , 5 µl/test	GeneID (NCBI): 968	CloneNo.: KP1
Wirt: Maus	Vollständiger Name: CD68 molecule	Anregungs-/Emissionsmaxima-Wellenlängen: 493 nm / 522 nm
Isotyp: IgG1, kappa	Berechnete Masse: 37 kDa	

Anwendungen

Geprüfte Anwendungen:
FC (Intra)

Getestete Reaktivität:
Human

Hintergrundinformationen

CD68 is a type I transmembrane glycoprotein that is highly expressed by human monocytes and tissue macrophages. It belongs to the lysosomal/endosomal-associated membrane glycoprotein (LAMP) family and primarily localizes to lysosomes and endosomes with a smaller fraction circulating to the cell surface. CD68 is also a member of the scavenger receptor family. It may play a role in phagocytic activities of tissue macrophages.

Lagerung

Lagerungsbedingungen:
Store at 2-8°C. Avoid exposure to light. Stable for one year after shipment.

Lagerungspuffer:
PBS mit 0,1% Natriumazid und 0,5% BSA, pH 7,3.

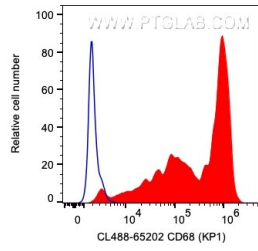
For technical support and original validation data for this product please contact:

T: 1 (888) 4PTGLAB (1-888-478-4522) (toll free in USA), or 1(312) 455-8498 (outside USA)

E: proteintech@ptglab.com
W: ptglab.com

This product is exclusively available under Proteintech Group brand and is not available to purchase from any other manufacturer.

Ausgewählte Validierungsdaten



1X10⁶ human PBMCs were intracellularly stained with 5 ul CoraLite® Plus 488 Anti-Human CD68 (CL488-65202, Clone:KP1) (red) or unstained (blue). Cells were fixed and permeabilized with Transcription Factor Staining Buffer Kit (PF00011).