

Nur für Forschungszwecke

# IgG2b Isotype Control Monoklonaler Antikörper



Katalog-Nr.:CL488-65211

## Allgemeine Informationen

<b>Katalog-Nr.:</b> CL488-65211	<b>GenBank-Zugangsnummer:</b> GeneID (NCBI):	<b>Reinigungsmethode:</b> Affinitätsreinigung
<b>Größe:</b> 100ug, 0.5 mg/mL	<b>Vollständiger Name:</b>	<b>CloneNo.:</b> LTF-2
<b>Wirt:</b> Ratte		<b>Anregungs-/Emissionsmaxima-Wellenlängen:</b> 493 nm / 522 nm
<b>Isotyp:</b> IgG2b		

## Anwendungen

**Geprüfte Anwendungen:**  
FC  
**Getestete Reaktivität:**

## Hintergrundinformationen

The LTF-2 immunoglobulin is useful as an isotype-matched control. The LTF-2 immunoglobulin has an unknown binding specificity and is used as an isotype control for rat IgG2b antibodies. This antibody has been quality-tested for flow cytometry as negative control.

## Lagerung

**Lagerungsbedingungen:**  
Bei 2-8°C lagern. Vor Licht schützen.  
**Lagerungspuffer:**  
PBS mit 0,1% Natriumazid und 0,5% BSA, pH 7,3.

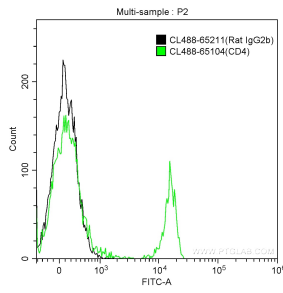
For technical support and original validation data for this product please contact:

T: 1 (888) 4PTGLAB (1-888-478-4522) (toll free in USA), or 1(312) 455-8498 (outside USA)

E: [proteintech@ptglab.com](mailto:proteintech@ptglab.com)  
W: [ptglab.com](http://ptglab.com)

**This product is exclusively available under Proteintech Group brand and is not available to purchase from any other manufacturer.**

## Ausgewählte Validierungsdaten



1X10<sup>6</sup> mouse splenocytes were surface stained with CoraLite® Plus 488-conjugated Rat IgG2b Isotype Control (CL488-65211, Clone: LTF-2) (black) or CoraLite® Plus 488-conjugated Anti-Mouse CD4 (CL488-65104, Clone: GK1.5) (green). Cells were not fixed.