

Nur für Forschungszwecke

CD85j / LILRB1 Monoklonaler Antikörper

Katalog-Nr.:CL488-65238



Allgemeine Informationen

Katalog-Nr.: CL488-65238	GenBank-Zugangsnummer: BC015731	Reinigungsmethode: N/A
Größe: 100tests , 5 ul/test	GeneID (NCBI): 10859	CloneNo.: GHI/75
Wirt: Maus	Vollständiger Name: leukocyte immunoglobulin-like receptor, subfamily B (with TM and ITIM domains), member 1	Anregungs-/Emissionsmaxima-Wellenlängen: 493 nm / 522 nm
Isotyp: IgG2b, kappa	Berechnete Masse: 71 kDa	

Anwendungen

Geprüfte Anwendungen:
FC

Getestete Reaktivität:
Human

Hintergrundinformationen

Lagerung

Lagerungsbedingungen:
Store at 2-8°C. Avoid exposure to light. Stable for one year after shipment.
Lagerungspuffer:
PBS with 0.09% sodium azide and 0.5% BSA.

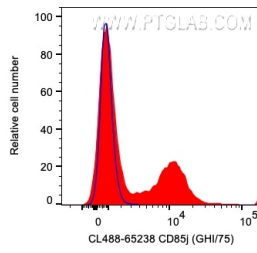
For technical support and original validation data for this product please contact:

T: 1 (888) 4PTGLAB (1-888-478-4522) (toll free in USA), or 1(312) 455-8498 (outside USA)

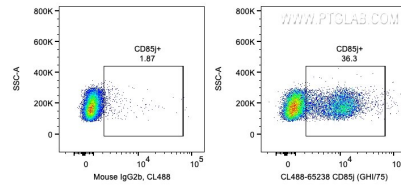
E: proteintech@ptglab.com
W: ptglab.com

This product is exclusively available under Proteintech Group brand and is not available to purchase from any other manufacturer.

Ausgewählte Validierungsdaten



1X10⁶ human PBMCs were surface stained with 5 ul CoraLite® Plus 488 Anti-Human CD85j / LILRB1 (CL488-65238, Clone:GHI/75) (red) or Mouse IgG2b Isotype Control. Cells were not fixed. Lymphocytes were gated.



1X10⁶ human PBMCs were surface stained with 5 ul CoraLite® Plus 488 Anti-Human CD85j / LILRB1 (CL488-65238, Clone:GHI/75) or Mouse IgG2b Isotype Control. Cells were not fixed. Lymphocytes were gated.