

Nur für Forschungszwecke

CD35 Monoklonaler Antikörper

Katalog-Nr.:CL488-65254



Allgemeine Informationen

Katalog-Nr.: CL488-65254	GenBank-Zugangsnummer: NM_000573	Reinigungsmethode: Affinitätsreinigung
Größe: 100tests , 5 µl/test	GeneID (NCBI): 1378	CloneNo.: E11
Wirt: Maus	Vollständiger Name: complement component (3b/4b) receptor 1 (Knops blood group)	Anregungs-/Emissionsmaxima- Wellenlängen: 493 nm / 522 nm
Isotyp: IgG1, kappa	Berechnete Masse: 224 kDa	

Anwendungen

Geprüfte Anwendungen:
FC

Getestete Reaktivität:
Human

Hintergrundinformationen

Lagerung

Lagerungsbedingungen:
Store at 2-8°C. Avoid exposure to light. Stable for one year after shipment.
Lagerungspuffer:
PBS with 0.09% sodium azide and 0.5% BSA.

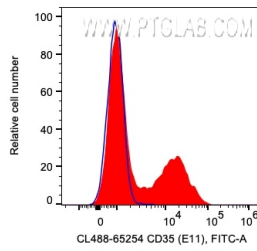
For technical support and original validation data for this product please contact:

T: 1 (888) 4PTGLAB (1-888-478-4522) (toll free
in USA), or 1(312) 455-8498 (outside USA)

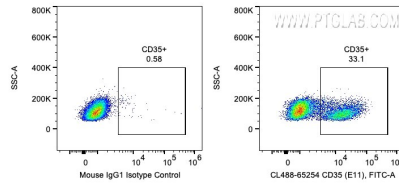
E: proteintech@ptglab.com
W: ptglab.com

This product is exclusively available under Proteintech Group brand and is not available to purchase from any other manufacturer.

Ausgewählte Validierungsdaten



1X10⁶ human PBMCs were surface stained with 5 ul CoraLite® Plus 488 Anti-Human CD35 (CL488-65254, Clone: E11), or Mouse IgG1 Isotype Control. Cells were not fixed. Lymphocytes were gated.



1X10⁶ human PBMCs were surface stained with 5 ul CoraLite® Plus 488 Anti-Human CD35 (CL488-65254, Clone: E11), or Mouse IgG1 Isotype Control. Cells were not fixed. Lymphocytes were gated.