

Nur für Forschungszwecke

MCL1 Monoklonaler Antikörper

Katalog-Nr.:CL488-66026

Vorgestelltes Produkt



Allgemeine Informationen

| | | |
|---|--|---|
| Katalog-Nr.: CL488-66026 | GenBank-Zugangsnummer: BC107735 | Reinigungsmethode: Protein-A-Reinigung |
| Größe: 100ul , Konzentration: 1000 µg/ml von4170 Nanodrop; | GeneID (NCBI): 4170 | CloneNo.: 1E3C2 |
| Wirt: Maus | Vollständiger Name: myeloid cell leukemia sequence 1 (BCL2-related) | Empfohlene Verdünnungen: IF 1:50-1:500 |
| Isotyp: IgG2b | Berechnete Masse: 350 aa, 37 kDa | Anregungs-/Emissionsmaxima- Wellenlängen: 493 nm / 522 nm |
| Immunogen Katalognummer: AG10609 | | |

Anwendungen

| | |
|--|--|
| Geprüfte Anwendungen: FC (Intra), IF | Positivkontrollen: IF : HeLa-Zellen, |
| Getestete Reaktivität: Human | |

Hintergrundinformationen

MCL-1 is an anti-apoptotic member of the Bcl-2 family originally isolated from the ML-1 human myeloid leukemia cell line. Similar to BCL2 and BCL2L1, MCL1 can interact with BAX and/or BAK1 to inhibit mitochondria-mediated apoptosis. Mcl-1 is critical for the proliferation and survival of myeloma cells in vitro, and overexpression of Mcl-1 protein in myeloma cells is associated with relapse and short event-free survival in multiple myeloma patients. Recent studies show that MCL-1 is upregulated in numerous haematological and solid tumour malignancies. Therefore, MCL-1 has been suggested as a potential new therapeutic target.

Lagerung

Lagerungsbedingungen:
Bei -20°C lagern. Vor Licht schützen.
Lagerungspuffer:
BS mit 50% Glycerin, 0,05% Proclin300, 0,5% BSA, pH 7,3.
Aliquotieren ist nicht notwendig bei -20°C Lagerung

***** 20ul-Größen enthalten 0.1% BSA**

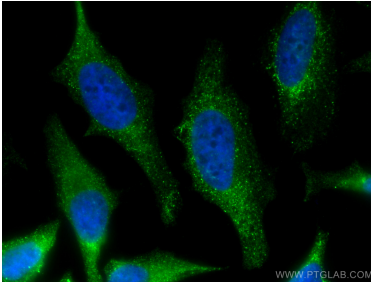
For technical support and original validation data for this product please contact:

T: 1 (888) 4PTGLAB (1-888-478-4522) (toll free
in USA), or 1(312) 455-8498 (outside USA)

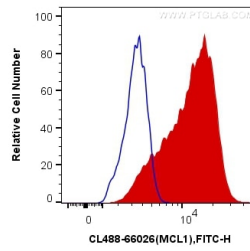
E: proteintech@ptglab.com
W: ptglab.com

This product is exclusively available under Proteintech Group brand and is not available to purchase from any other manufacturer.

Ausgewählte Validierungsdaten



Immunofluorescent analysis of (4% PFA) fixed HeLa cells using CoraLite® Plus 488 MCL1 antibody (CL488-66026, Clone: 1E3C2) at dilution of 1:200.



1X10⁶ HeLa cells were intracellularly stained with 0.4 ug CoraLite® Plus 488 Anti-Human MCL1 (CL488-66026, Clone:1E3C2) (red), or 0.4 ug Mouse IgG2b Isotype Control (CL488-66360-3, Clone: K11B8C4B5) (blue). Cells were fixed with 4% PFA and permeabilized with Flow Cytometry Perm Buffer (PF00011-C).